

## Product datasheet for **AP54275PU-N**

### **STING (TMEM173) (C-term) Rabbit Polyclonal Antibody**

#### **Product data:**

<b>Product Type:</b>	Primary Antibodies
<b>Applications:</b>	FC, WB
<b>Recommended Dilution:</b>	ELISA: 1:1;000. Western blot: 1:100~500. Flow cytometry: 1:10~50.
<b>Reactivity:</b>	Human, Mouse
<b>Host:</b>	Rabbit
<b>Isotype:</b>	Ig
<b>Clonality:</b>	Polyclonal
<b>Immunogen:</b>	KLH conjugated synthetic peptide between 311-340 amino acids from the C-terminal region of human TMEM173.
<b>Specificity:</b>	This antibody detects TMEM173 / STING (C-term).
<b>Formulation:</b>	PBS with 0.09% (W/V) sodium azide State: Aff - Purified State: Liquid Ig fraction
<b>Concentration:</b>	lot specific
<b>Purification:</b>	Protein A column followed by peptide affinity purification
<b>Conjugation:</b>	Unconjugated
<b>Storage:</b>	Store at 2 - 8 °C for up to six months or (in aliquots) at -20 °C for longer. Avoid repeated freezing and thawing.
<b>Stability:</b>	Shelf life: one year from despatch.
<b>Gene Name:</b>	transmembrane protein 173
<b>Database Link:</b>	<a href="#">Entrez Gene 72512 Mouse</a> <a href="#">Entrez Gene 340061 Human</a> <a href="#">Q86WV6</a>



[View online »](#)

**Background:**

Acts as a facilitator of innate immune signaling. Able to activate both NF-kappa-B and IRF3 transcription pathways to induce expression of type I interferon (IFN-alpha and IFN-beta) and exert a potent anti-viral state following expression. May be involved in translocon function, the translocon possibly being able to influence the induction of type I interferons. May be involved in transduction of apoptotic signals via its association with the major histocompatibility complex class II (MHC-II). Mediates death signaling via activation of the extracellular signal-regulated kinase (ERK) pathway.

**Synonyms:**

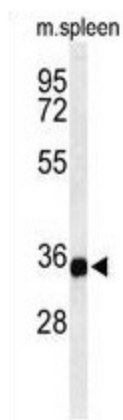
Transmembrane protein 173, MITA

**Note:**

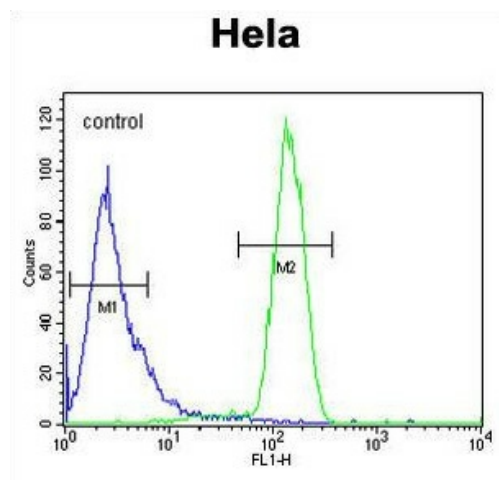
**Molecular Weight:** 42193 Da

**Protein Pathways:**

Cytosolic DNA-sensing pathway, RIG-I-like receptor signaling pathway

**Product images:**


Western blot analysis of TM173 Antibody (C-term) in mouse spleen tissue lysates (35 ug/lane). TM173 (arrow) was detected using the purified Pab.



TM173 Antibody (C-term) flow cytometric analysis of HeLa cells (right histogram) compared to a negative control cell (left histogram). FITC-conjugated goat-anti-rabbit secondary antibodies were used for the analysis.