

## Product datasheet for **AP54274PU-N**

### TMEM168 (C-term) Rabbit Polyclonal Antibody

#### Product data:

Product Type:	Primary Antibodies
Applications:	FC, WB
Recommended Dilution:	ELISA: 1:1;000. Western blot: 1:100~500. Flow cytometry: 1:10~50.
Reactivity:	Human
Host:	Rabbit
Isotype:	Ig
Clonality:	Polyclonal
Immunogen:	KLH conjugated synthetic peptide between 558-587 amino acids from the C-terminal region of human TM168
Specificity:	This antibody detects TMEM168 (C-term).
Formulation:	PBS with 0.09% (W/V) sodium azide State: Aff - Purified State: Liquid Ig fraction
Concentration:	lot specific
Purification:	Protein A column followed by peptide affinity purification
Conjugation:	Unconjugated
Storage:	Store at 2 - 8 °C for up to six months or (in aliquots) at -20 °C for longer. Avoid repeated freezing and thawing.
Stability:	Shelf life: one year from despatch.
Gene Name:	transmembrane protein 168
Database Link:	<a href="#">Entrez Gene 64418 Human Q9H0V1</a>
Background:	TMEM168 is a multi-pass membrane protein. It belongs to the TMEM168 family. The exact function of TMEM168 remains unknown.
Synonyms:	Transmembrane protein 168

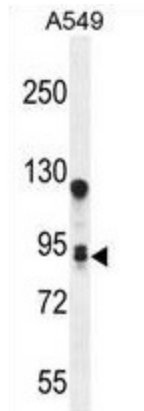


[View online »](#)

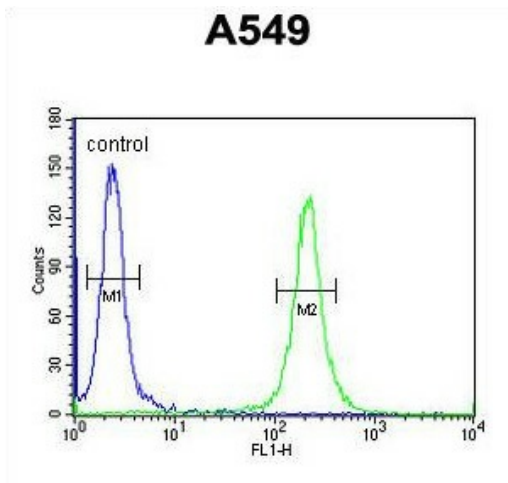
Note: **Molecular Weight:** 79755 Da

Protein Families: Transmembrane

**Product images:**



TM168 Antibody (C-term) western blot analysis in A549 cell line lysates (35 ug/lane). This demonstrates the TM168 antibody detected the TM168 protein (arrow).



TM168 Antibody (C-term) flow cytometric analysis of A549 cells (right histogram) compared to a negative control cell (left histogram). FITC-conjugated goat-anti-rabbit secondary antibodies were used for the analysis.