

Product datasheet for **AP54272PU-N**

HOX11 (TLX1) (Center) Rabbit Polyclonal Antibody

Product data:

Product Type:	Primary Antibodies
Applications:	WB
Recommended Dilution:	ELISA: 1:1;000. Western blot: 1:100~500.
Reactivity:	Human, Mouse
Host:	Rabbit
Isotype:	Ig
Clonality:	Polyclonal
Immunogen:	KLH conjugated synthetic peptide between 162-191 amino acids from the Central region of human TLX1
Specificity:	This antibody detects TLX1 (Center).
Formulation:	PBS with 0.09% (W/V) sodium azide State: Aff - Purified State: Liquid Ig fraction
Concentration:	lot specific
Purification:	Protein A column followed by peptide affinity purification
Conjugation:	Unconjugated
Storage:	Store at 2 - 8 °C for up to six months or (in aliquots) at -20 °C for longer. Avoid repeated freezing and thawing.
Stability:	Shelf life: one year from despatch.
Gene Name:	T-cell leukemia homeobox 1
Database Link:	Entrez Gene 21908 Mouse Entrez Gene 3195 Human P31314



[View online »](#)

Background:

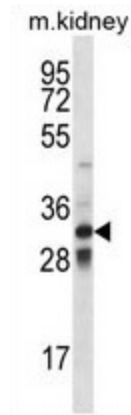
This gene encodes a nuclear transcription factor that belongs to the NK-linked or NK-like (NKL) subfamily of homeobox genes. The encoded protein is required for normal development of the spleen during embryogenesis. This protein is also involved in specification of neuronal cell fates. Ectopic expression of this gene due to chromosomal translocations is associated with certain T-cell acute lymphoblastic leukemias. Alternate splicing results in multiple transcript variants.

Synonyms:

TLX-1, T-cell leukemia homeobox protein 1, HOX11, Hox-11, TCL3, TCL-3

Note:

Molecular Weight: 34365 Da

Product images:

TLX1 Antibody (Center) western blot analysis in mouse kidney tissue lysates (35 ug/lane). This demonstrates the TLX1 antibody detected the TLX1 protein (arrow).