

## Product datasheet for **AP54271PU-N**

### TLR4 (Center) Rabbit Polyclonal Antibody

#### Product data:

Product Type:	Primary Antibodies
Applications:	WB
Recommended Dilution:	ELISA: 1:1;000. Western blot: 1:100~500.
Reactivity:	Human
Host:	Rabbit
Isotype:	Ig
Clonality:	Polyclonal
Immunogen:	KLH conjugated synthetic peptide between 676~706 amino acids from the Central region of human TLR4
Specificity:	This antibody detects CD284 / TLR4 (Center).
Formulation:	PBS with 0.09% (W/V) sodium azide State: Aff - Purified State: Liquid Ig fraction
Concentration:	lot specific
Purification:	Protein A column followed by peptide affinity purification
Conjugation:	Unconjugated
Storage:	Store at 2 - 8 °C for up to six months or (in aliquots) at -20 °C for longer. Avoid repeated freezing and thawing.
Stability:	Shelf life: one year from despatch.
Gene Name:	toll like receptor 4
Database Link:	<a href="#">Entrez Gene 7099 Human</a> <a href="#">O00206</a>



[View online »](#)

**Background:**

TLR4 is a member of the Toll-like receptor (TLR) family which plays a fundamental role in pathogen recognition and activation of innate immunity. TLRs are highly conserved from *Drosophila* to humans and share structural and functional similarities. They recognize pathogen-associated molecular patterns (PAMPs) that are expressed on infectious agents, and mediate the production of cytokines necessary for the development of effective immunity. The various TLRs exhibit different patterns of expression. This receptor is most abundantly expressed in placenta, and in myelomonocytic subpopulation of the leukocytes. It has been implicated in signal transduction events induced by lipopolysaccharide (LPS) found in most gram-negative bacteria.

**Synonyms:**

Toll-like receptor 4

**Note:**

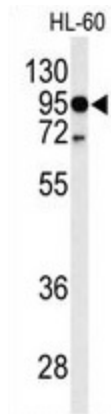
**Molecular Weight:** 95680 Da

**Protein Families:**

Druggable Genome, Transmembrane

**Protein Pathways:**

Pathogenic *Escherichia coli* infection, Toll-like receptor signaling pathway

**Product images:**

Western blot analysis of TLR4 Antibody (Center) in HL-60 cell line lysates (35 ug/lane). TLR4 (arrow) was detected using the purified Pab.