

Product datasheet for **AP54270PU-N**

TLL2 (Center) Rabbit Polyclonal Antibody

Product data:

Product Type:	Primary Antibodies
Applications:	IHC, WB
Recommended Dilution:	Peptide ELISA: 1/1000. Western blot: 1/1000. Immunohistochemistry on Paraffin Sections: 1/50~1/100.
Reactivity:	Human
Host:	Rabbit
Isotype:	Ig
Clonality:	Polyclonal
Immunogen:	KLH conjugated synthetic peptide between 298-328 amino acids from the Central region of Human TLL2
Specificity:	This antibody detects TLL2 (Center).
Formulation:	PBS State: Purified State: Liquid Ig fraction Preservative: 0.09% (W/V) Sodium Azide
Concentration:	lot specific
Purification:	Saturated Ammonium Sulfate (SAS) precipitation followed by dialysis against PBS
Conjugation:	Unconjugated
Storage:	Store undiluted at 2-8°C for one month or (in aliquots) at -20°C for longer. Avoid repeated freezing and thawing.
Stability:	Shelf life: one year from despatch.
Gene Name:	tolloid like 2
Database Link:	Entrez Gene 7093 Human Q9Y6L7
Background:	This gene encodes an astacin-like zinc-dependent metalloprotease and is a subfamily member of the metzincin family. Unlike other family members, a similar protein in mice does not cleave procollagen C-propeptides or chordin.



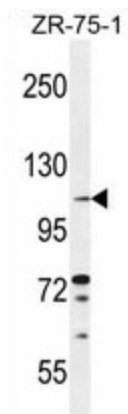
[View online »](#)

Synonyms: Tolloid-like protein 2

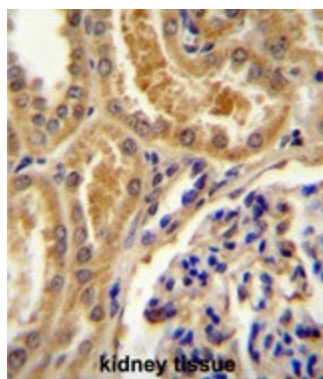
Note: **Molecular Weight:** 113557 Da

Protein Families: Druggable Genome, Secreted Protein

Product images:



TLL2 Antibody (Center) western blot analysis in ZR-75-1 cell line lysates (35 ug/lane). This demonstrates the TLL2 antibody detected the TLL2 protein (arrow).



TLL2 Antibody (Center) immunohistochemistry analysis in formalin fixed and paraffin embedded human kidney tissue followed by peroxidase conjugation of the secondary antibody and DAB staining. This data demonstrates the use of TLL2 Antibody (Center) for immunohistochemistry. Clinical relevance has not been evaluated.