

## Product datasheet for **AP54269PU-N**

### TLL1 (C-term) Rabbit Polyclonal Antibody

#### Product data:

Product Type:	Primary Antibodies
Applications:	IHC, WB
Recommended Dilution:	ELISA: 1:1;000. Western blot: 1:100~500. Immunohistochemistry on paraffin sections: 1:50~100.
Reactivity:	Human
Host:	Rabbit
Isotype:	Ig
Clonality:	Polyclonal
Immunogen:	KLH conjugated synthetic peptide between 877-905 amino acids from the C-terminal region of human TLL1
Specificity:	This antibody detects TLL1 (C-term).
Formulation:	PBS with 0.09% (W/V) sodium azide State: Aff - Purified State: Liquid Ig fraction
Concentration:	lot specific
Purification:	Protein A column followed by peptide affinity purification
Conjugation:	Unconjugated
Storage:	Store at 2 - 8 °C for up to six months or (in aliquots) at -20 °C for longer. Avoid repeated freezing and thawing.
Stability:	Shelf life: one year from despatch.
Gene Name:	tolloid like 1
Database Link:	<a href="#">Entrez Gene 7092 Human O43897</a>
Background:	This gene encodes an astacin-like zinc-dependent metalloprotease and is a subfamily member of the metzincin family. A similar protein in mice is required during heart development and specifically processes procollagen C-propeptides and chordin at similar cleavage sites.



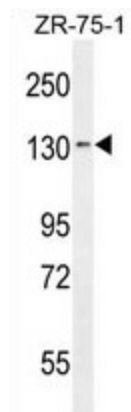
[View online »](#)

**Synonyms:** Tolloid-like protein 1, TLL

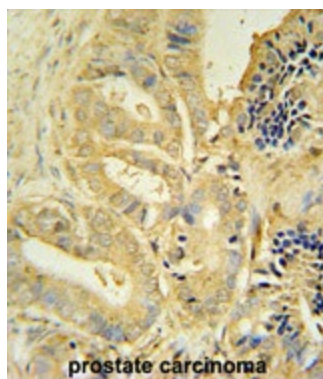
**Note:** **Molecular Weight:** 114709 Da

**Protein Families:** Druggable Genome, Protease, Secreted Protein

### Product images:



TLL1 Antibody (C-term) western blot analysis in ZR-75-1 cell line lysates (35 ug/lane). This demonstrates the TLL1 antibody detected the TLL1 protein (arrow).



TLL1 antibody (C-term) immunohistochemistry analysis in formalin fixed and paraffin embedded human prostate carcinoma followed by peroxidase conjugation of the secondary antibody and DAB staining. This data demonstrates the use of the TLL1 antibody (C-term) for immunohistochemistry. Clinical relevance has not been evaluated.