

Product datasheet for **AP54268PU-N**

TLE4 (N-term) Rabbit Polyclonal Antibody

Product data:

Product Type:	Primary Antibodies
Applications:	WB
Recommended Dilution:	ELISA: 1:1;000. Western blot: 1:100~500.
Reactivity:	Human
Host:	Rabbit
Isotype:	Ig
Clonality:	Polyclonal
Immunogen:	KLH conjugated synthetic peptide between 166-196 amino acids from the N-terminal region of human TLE4
Specificity:	This antibody detects TLE4 (N-term).
Formulation:	PBS with 0.09% (W/V) sodium azide State: Aff - Purified State: Liquid Ig fraction
Concentration:	lot specific
Purification:	Protein A column followed by peptide affinity purification
Conjugation:	Unconjugated
Storage:	Store at 2 - 8 °C for up to six months or (in aliquots) at -20 °C for longer. Avoid repeated freezing and thawing.
Stability:	Shelf life: one year from despatch.
Gene Name:	transducin like enhancer of split 4
Database Link:	Entrez Gene 7091 Human Q04727
Background:	TLE4 is a transcriptional corepressor that binds to a number of transcription factors. Inhibits the transcriptional activation mediated by PAX5, and by CTNNB1 and TCF family members in Wnt signaling. The effects of full-length TLE family members may be modulated by association with dominant-negative AES (By similarity).
Synonyms:	Transducin-like enhancer protein 4, KIAA1261, GRG4

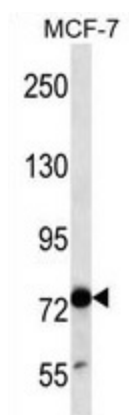


[View online »](#)

Note: **Molecular Weight:** 83755 Da

Protein Families: Transcription Factors

Product images:



TLE4 Antibody (N-term) western blot analysis in MCF-7 cell line lysates (35 ug/lane). This demonstrates the TLE4 antibody detected the TLE4 protein (arrow).