

Product datasheet for **AP54267PU-N**

TLE2 (C-term) Rabbit Polyclonal Antibody

Product data:

Product Type:	Primary Antibodies
Applications:	WB
Recommended Dilution:	ELISA: 1:1;000. Western blot: 1:100~500.
Reactivity:	Human, Mouse
Host:	Rabbit
Isotype:	Ig
Clonality:	Polyclonal
Immunogen:	KLH conjugated synthetic peptide between 636-665 amino acids from the C-terminal region of human TLE2
Specificity:	This antibody detects TLE2 (C-term).
Formulation:	PBS with 0.09% (W/V) sodium azide State: Aff - Purified State: Liquid Ig fraction
Concentration:	lot specific
Purification:	Protein A column followed by peptide affinity purification
Conjugation:	Unconjugated
Storage:	Store at 2 - 8 °C for up to six months or (in aliquots) at -20 °C for longer. Avoid repeated freezing and thawing.
Stability:	Shelf life: one year from despatch.
Gene Name:	transducin like enhancer of split 2
Database Link:	Entrez Gene 7089 Human Q04725
Background:	TLE2 is a transcriptional corepressor that binds to a number of transcription factors. Inhibits the transcriptional activation mediated by CTNNB1 and TCF family members in Wnt signaling. The effects of full-length TLE family members may be modulated by association with dominant-negative AES (By similarity).
Synonyms:	Transducin-like enhancer protein 2, TLE2, GRG2

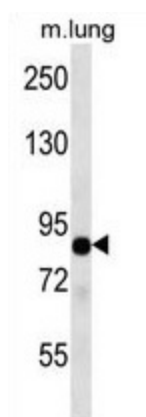


[View online »](#)

Note: **Molecular Weight:** 79841 Da

Protein Families: Transcription Factors

Product images:



TLE2 Antibody (C-term) western blot analysis in mouse lung tissue lysates (35 ug/lane). This demonstrates the TLE2 antibody detected the TLE2 protein (arrow).