

Product datasheet for **AP54266PU-N**

TLE 1 (TLE1) (Center) Rabbit Polyclonal Antibody

Product data:

Product Type:	Primary Antibodies
Applications:	WB
Recommended Dilution:	ELISA: 1:1;000. Western blot: 1:1000.
Reactivity:	Human
Host:	Rabbit
Isotype:	Ig
Clonality:	Polyclonal
Immunogen:	KLH conjugated synthetic peptide between 199~228 amino acids from the Central region of human TLE1
Specificity:	This antibody detects TLE1 (Center).
Formulation:	PBS with 0.09% (W/V) sodium azide State: Aff - Purified State: Liquid Ig fraction
Concentration:	lot specific
Purification:	Protein A column followed by peptide affinity purification
Conjugation:	Unconjugated
Storage:	Store at 2 - 8 °C for up to six months or (in aliquots) at -20 °C for longer. Avoid repeated freezing and thawing.
Stability:	Shelf life: one year from despatch.
Gene Name:	transducin like enhancer of split 1
Database Link:	Entrez Gene 7088 Human Q04724
Background:	Transcriptional corepressor that binds to a number of transcription factors. Inhibits NF-kappa-B-regulated gene expression. Inhibits the transcriptional activation mediated by FOXA2, and by CTNNB1 and TCF family members in Wnt signaling. The effects of full-length TLE family members may be modulated by association with dominant-negative AES. Unusual function as coactivator for ESRRG.



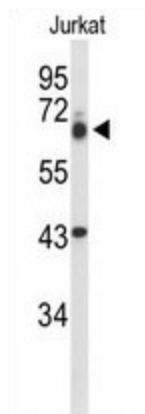
[View online »](#)

Synonyms: Transducin-like enhancer protein 1, ESG1

Note: **Molecular Weight:** 83201 Da

Protein Families: Transcription Factors

Product images:



Western blot analysis of TLE1 Antibody (Center) in Jurkat cell line lysates (35 ug/lane). TLE1 (arrow) was detected using the purified Pab.