

Product datasheet for **AP54262PU-N**

Zonula occludens protein 3 (TJP3) (N-term) Rabbit Polyclonal Antibody

Product data:

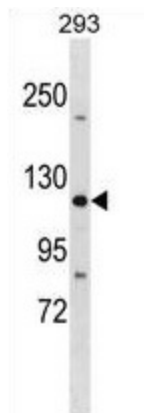
Product Type:	Primary Antibodies
Applications:	WB
Recommended Dilution:	ELISA: 1:1;000. Western blot: 1:100~500.
Reactivity:	Human
Host:	Rabbit
Isotype:	Ig
Clonality:	Polyclonal
Immunogen:	KLH conjugated synthetic peptide between 101-129 amino acids from the N-terminal region of human TJP3
Specificity:	This antibody detects TJP3 (N-term).
Formulation:	PBS with 0.09% (W/V) sodium azide State: Aff - Purified State: Liquid Ig fraction
Concentration:	lot specific
Purification:	Protein A column followed by peptide affinity purification
Conjugation:	Unconjugated
Storage:	Store at 2 - 8 °C for up to six months or (in aliquots) at -20 °C for longer. Avoid repeated freezing and thawing.
Stability:	Shelf life: one year from despatch.
Gene Name:	tight junction protein 3
Database Link:	Entrez Gene 27134 Human O95049
Background:	TJP3 is a member of the family of membrane-associated guanylate kinase-like proteins (MAGUK) that associate with intracellular junctions (Itoh et al., 1999 [PubMed 10601346]).
Synonyms:	Tight junction protein 3, Tight junction protein ZO-3, ZO3
Note:	Molecular Weight: 102800 Da



[View online »](#)

Protein Pathways: Tight junction

Product images:



TJP3 Antibody (N-term) western blot analysis in 293 cell line lysates (35 ug/lane). This demonstrates the TJP3 antibody detected the TJP3 protein (arrow).