

Product datasheet for **AP54260PU-N**

Tiparp (C-term) Rabbit Polyclonal Antibody

Product data:

Product Type:	Primary Antibodies
Applications:	WB
Recommended Dilution:	ELISA: 1:1;000. Western blot: 1:50~100.
Reactivity:	Human
Host:	Rabbit
Isotype:	Ig
Clonality:	Polyclonal
Immunogen:	KLH conjugated synthetic peptide between 270-300 amino acids from the C-terminal region of human Tiparp
Specificity:	This antibody detects TIPARP (C-term).
Formulation:	PBS with 0.09% (W/V) sodium azide State: Purified State: Liquid Ig fraction
Concentration:	lot specific
Purification:	Saturated Ammonium Sulfate (SAS) precipitation followed by dialysis against PBS
Conjugation:	Unconjugated
Storage:	Store at 2 - 8 °C for up to six months or (in aliquots) at -20 °C for longer. Avoid repeated freezing and thawing.
Stability:	Shelf life: one year from despatch.
Gene Name:	TCDD-inducible poly(ADP-ribose) polymerase
Database Link:	Entrez Gene 25976 Human Q8C1B2
Background:	Tiparp is a poly [ADP-ribose] polymerase using NAD(+) as a substrate to transfer ADP-ribose onto glutamic acid residues of a protein acceptor; repeated rounds of ADP-ribosylation leads to the formation of poly(ADP-ribose) chains on the protein, thereby altering the function of the target protein. May play a role in the adaptive response to chemical exposure (TCDD) and thereby mediates certain effects of the chemicals.

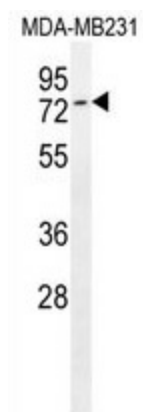


[View online »](#)

Synonyms: PARP7, PARP-7

Note: **Molecular Weight:** 75901 Da

Product images:



Tiparp Antibody (C-term) western blot analysis in MDA-MB231 cell line lysates (35 ug/lane). This demonstrates the Tiparp antibody detected the Tiparp protein (arrow).