

Product datasheet for **AP54259PU-N**

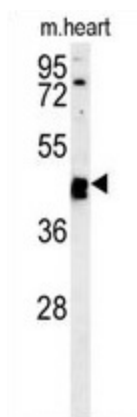
TINAGL1 (C-term) Rabbit Polyclonal Antibody

Product data:

Product Type:	Primary Antibodies
Applications:	WB
Recommended Dilution:	ELISA: 1:1;000. Western blot: 1:100~500.
Reactivity:	Human, Mouse
Host:	Rabbit
Isotype:	Ig
Clonality:	Polyclonal
Immunogen:	KLH conjugated synthetic peptide between 377-406 amino acids from the C-terminal region of human TINAGL1
Specificity:	This antibody detects TINAGL1 (C-term).
Formulation:	PBS with 0.09% (W/V) sodium azide State: Aff - Purified State: Liquid Ig fraction
Concentration:	lot specific
Purification:	Protein A column followed by peptide affinity purification
Conjugation:	Unconjugated
Storage:	Store at 2 - 8 °C for up to six months or (in aliquots) at -20 °C for longer. Avoid repeated freezing and thawing.
Stability:	Shelf life: one year from despatch.
Gene Name:	tubulointerstitial nephritis antigen like 1
Database Link:	Entrez Gene 94242 Mouse Entrez Gene 64129 Human Q9GZM7
Synonyms:	TINAGL, TIN Ag-related protein, TIN-Ag-RP, OLRG2, OLRG-2, LCN7, GIS5, PP6614, PSEC0088, UNQ204/PRO230
Note:	Molecular Weight: 52387 Da
Protein Families:	Druggable Genome, Protease, Secreted Protein



[View online »](#)

Product images:

TINAGL1 Antibody (C-term) western blot analysis in mouse heart tissue lysates (15 ug/lane). This demonstrates the TINAGL1 antibody detected TINAGL1 protein (arrow).