

Product datasheet for **AP54256PU-N**

TIMP1 (C-term) Rabbit Polyclonal Antibody

Product data:

Product Type:	Primary Antibodies
Applications:	IF, IHC, WB
Recommended Dilution:	ELISA: 1/1,000. Western blot: 1/1,000. Flow Cytometry: 1/10-1/50 Immunohistochemistry on paraffin sections: 1/50-1/100. Immunofluorescence: 1/10-1/50.
Reactivity:	Human
Host:	Rabbit
Isotype:	Ig
Clonality:	Polyclonal
Immunogen:	KLH conjugated synthetic peptide between 157-188 amino acids from the C-terminal region of human TIMP1
Specificity:	This antibody detects TIMP1 (C-term).
Formulation:	PBS State: Purified State: Liquid Ig fraction Preservative: 0.09% (W/V) Sodium Azide
Concentration:	lot specific
Purification:	Saturated Ammonium Sulfate (SAS) precipitation followed by dialysis against PBS
Conjugation:	Unconjugated
Storage:	Store undiluted at 2-8°C for one month or (in aliquots) at -20°C for longer. Avoid repeated freezing and thawing.
Stability:	Shelf life: one year from despatch.
Gene Name:	TIMP metalloproteinase inhibitor 1
Database Link:	Entrez Gene 7076 Human P01033



[View online »](#)

Background:

This gene belongs to the TIMP gene family. The proteins encoded by this gene family are natural inhibitors of the matrix metalloproteinases (MMPs), a group of peptidases involved in degradation of the extracellular matrix. In addition to its inhibitory role against most of the known MMPs, the encoded protein is able to promote cell proliferation in a wide range of cell types, and may also have an anti-apoptotic function. Transcription of this gene is highly inducible in response to many cytokines and hormones. In addition, the expression from some but not all inactive X chromosomes suggests that this gene inactivation is polymorphic in human females. This gene is located within intron 6 of the synapsin I gene and is transcribed in the opposite direction.

Synonyms:

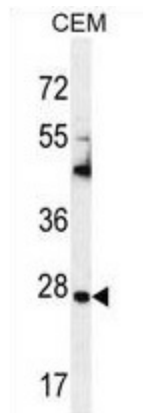
TIMP-1, TIMP, Tissue inhibitor of metalloproteinases, Metalloproteinase inhibitor 1, EPA, CLGI

Note:

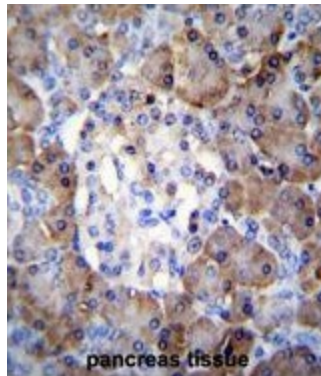
Molecular Weight: 23171 Da

Protein Families:

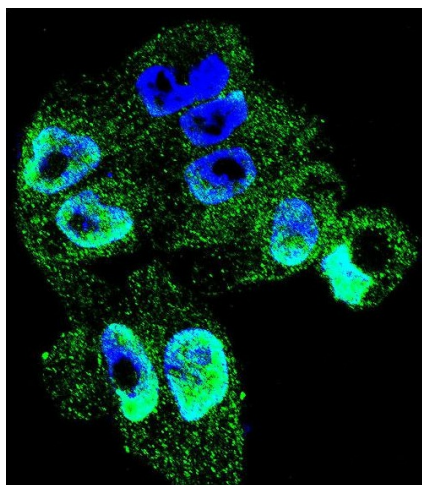
Druggable Genome, Secreted Protein

Product images:

TIMP1 Antibody (C-term) western blot analysis in CEM cell line lysates (35 ug/lane). This demonstrates the TIMP1 antibody detected the TIMP1 protein (arrow).



TIMP1 Antibody (C-term) immunohistochemistry analysis in formalin fixed and paraffin embedded human pancreas tissue followed by peroxidase conjugation of the secondary antibody and DAB staining. This data demonstrates the use of TIMP1 Antibody (C-term) for immunohistochemistry. Clinical relevance has not been evaluated.



Confocal immunofluorescent analysis of TIMP1 Antibody (C-term) with A2058 cell followed by Alexa Fluor 488-conjugated goat anti-rabbit IgG (green). DAPI was used to stain the cell nuclear (blue).