

Product datasheet for **AP54251PU-N**

TIGD3 (C-term) Rabbit Polyclonal Antibody

Product data:

Product Type:	Primary Antibodies
Applications:	IHC, WB
Recommended Dilution:	ELISA: 1:1;000. Western blot: 1:100~500. Immunohistochemistry on paraffin sections. 1:50~100.
Reactivity:	Human
Host:	Rabbit
Isotype:	Ig
Clonality:	Polyclonal
Immunogen:	KLH conjugated synthetic peptide between 378-408 amino acids from the C-terminal region of human TIGD3
Specificity:	This antibody detects TIGD3 (C-term).
Formulation:	PBS with 0.09% (W/V) sodium azide State: Aff - Purified State: Liquid Ig fraction
Concentration:	lot specific
Purification:	Protein A column followed by peptide affinity purification
Conjugation:	Unconjugated
Storage:	Store at 2 - 8 °C for up to six months or (in aliquots) at -20 °C for longer. Avoid repeated freezing and thawing.
Stability:	Shelf life: one year from despatch.
Gene Name:	tigger transposable element derived 3
Database Link:	Entrez Gene 220359 Human Q6B0B8



[View online »](#)

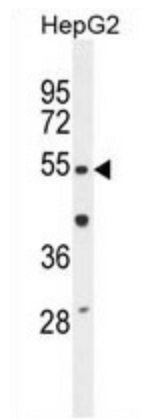
Background: The protein encoded by this gene belongs to the tigger subfamily of the pogo superfamily of DNA-mediated transposons in humans. These proteins are related to DNA transposons found in fungi and nematodes, and more distantly to the Tc1 and mariner transposases. They are also very similar to the major mammalian centromere protein B. The exact function of this gene is not known.

Synonyms: TIGD3

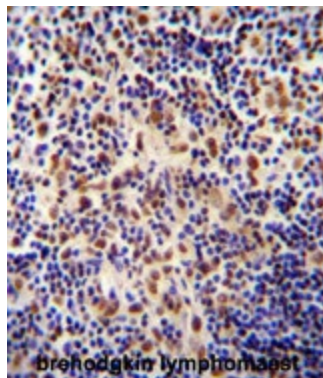
Note: **Molecular Weight:** 52027 Da

Protein Families: Transcription Factors

Product images:



TIGD3 Antibody (C-term) western blot analysis in HepG2 cell line lysates (35 ug/lane). This demonstrates the TIGD3 antibody detected the TIGD3 protein (arrow).



TIGD3 antibody (C-term) immunohistochemistry analysis in formalin fixed and paraffin embedded human Hodgkin lymphoma followed by peroxidase conjugation of the secondary antibody and DAB staining. This data demonstrates the use of the TIGD3 antibody (C-term) for immunohistochemistry. Clinical relevance has not been evaluated.