

Product datasheet for **AP54250PU-N**

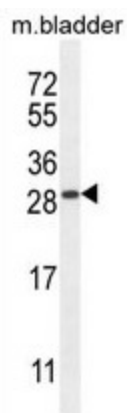
TIFAB (Center) Rabbit Polyclonal Antibody

Product data:

Product Type:	Primary Antibodies
Applications:	WB
Recommended Dilution:	ELISA: 1:1;000. Western blot: 1:100~500.
Reactivity:	Human, Mouse
Host:	Rabbit
Isotype:	Ig
Clonality:	Polyclonal
Immunogen:	KLH conjugated synthetic peptide between 40-70 amino acids from the Central region of human TIFAB
Specificity:	This antibody detects TIFAB (Center).
Formulation:	PBS with 0.09% (W/V) sodium azide State: Aff - Purified State: Liquid Ig fraction
Concentration:	lot specific
Purification:	Protein A column followed by peptide affinity purification
Conjugation:	Unconjugated
Storage:	Store at 2 - 8 °C for up to six months or (in aliquots) at -20 °C for longer. Avoid repeated freezing and thawing.
Stability:	Shelf life: one year from despatch.
Gene Name:	TIFA inhibitor
Database Link:	Entrez Gene 497189 Human Q6ZNK6
Background:	TIFAB associates with TIFA (MIM 609028) and inhibits TIFA-mediated activation of NF-kappa-B (NFKB1; MIM 164011) (Matsumura et al., 2004 [PubMed 15047173]).
Synonyms:	TRAF-interacting protein with FHA domain-containing protein B
Note:	Molecular Weight: 17888 Da



[View online »](#)

Product images:

TIFAB Antibody (Center) western blot analysis in mouse bladder tissue lysates (35 ug/lane). This demonstrates the TIFAB antibody detected the TIFAB protein (arrow).