

Product datasheet for **AP54249PU-N**

TIFA (N-term) Rabbit Polyclonal Antibody

Product data:

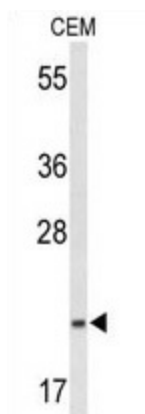
Product Type:	Primary Antibodies
Applications:	WB
Recommended Dilution:	ELISA: 1/1000. Western blot: 1/1000.
Reactivity:	Human
Host:	Rabbit
Isotype:	Ig
Clonality:	Polyclonal
Immunogen:	KLH conjugated synthetic peptide between 52–79 amino acids from the N-terminal region of human TIFA
Specificity:	This antibody detects TIFA / T2BP (N-term).
Formulation:	PBS with 0.09% (W/V) Sodium Azide State: Aff - Purified State: Liquid Ig fraction
Concentration:	lot specific
Purification:	Protein A column followed by peptide affinity purification
Conjugation:	Unconjugated
Storage:	Store undiluted at 2-8°C for one month or (in aliquots) at -20°C to -80°C for longer. Avoid repeated freezing and thawing.
Stability:	Shelf life: one year from despatch.
Gene Name:	TRAF interacting protein with forkhead associated domain
Database Link:	Entrez Gene 92610 Human Q96CG3
Background:	Adapter protein which mediates the IRAK1 and TRAF6 interaction following IL-1 stimulation, resulting in the downstream activation of NF-kappa-B and AP-1 pathways. Induces the oligomerization and polyubiquitination of TRAF6, which leads to the activation of TAK1 and IKK through a proteasome-independent mechanism.
Synonyms:	TRAF2-binding protein



[View online »](#)

Note: **Molecular Weight:** 21445 Da

Product images:



Western blot analysis of TIFA Antibody (N-term) in CEM cell line lysates (35 ug/lane). TIFA (arrow) was detected using the purified Pab.