

Product datasheet for **AP54248PU-N**

KLF10 (Center) Rabbit Polyclonal Antibody

Product data:

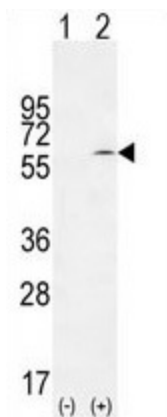
Product Type:	Primary Antibodies
Applications:	WB
Recommended Dilution:	ELISA: 1:1;000. Western blot: 1:50~100.
Reactivity:	Human
Host:	Rabbit
Isotype:	Ig
Clonality:	Polyclonal
Immunogen:	KLH conjugated synthetic peptide between 204-233 amino acids from the Central region of human TIEG
Specificity:	This antibody detects KLF10 / TIEG1 (Center).
Formulation:	PBS with 0.09% (W/V) sodium azide State: Purified State: Liquid Ig fraction
Concentration:	lot specific
Purification:	Saturated Ammonium Sulfate (SAS) precipitation followed by dialysis against PBS
Conjugation:	Unconjugated
Storage:	Store at 2 - 8 °C for up to six months or (in aliquots) at -20 °C for longer. Avoid repeated freezing and thawing.
Stability:	Shelf life: one year from despatch.
Gene Name:	Kruppel-like factor 10
Database Link:	Entrez Gene 7071 Human Q13118
Background:	Transcriptional repressor involved in the regulation of cell growth. Inhibits cell growth. Binds to the consensus sequence 5'-GGTGTG-3'.
Synonyms:	Krueppel-like factor 10, EGR-alpha, TIEG, TIEG-1
Note:	Molecular Weight: 52555 Da



[View online »](#)

Protein Families: Druggable Genome, Transcription Factors

Product images:



Western blot analysis of TIEG (arrow) using rabbit polyclonal TIEG Antibody (Center). 293 cell lysates (2 ug/lane) either nontransfected (Lane 1) or transiently transfected (Lane 2) with the TIEG gene.