

Product datasheet for **AP54245PU-N**

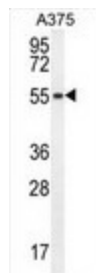
THUMPD3 (Center) Rabbit Polyclonal Antibody

Product data:

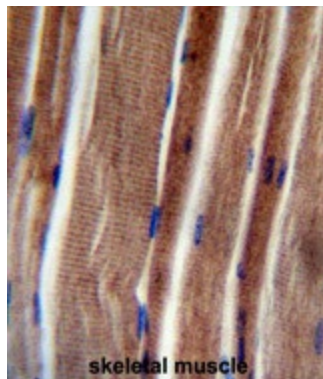
Product Type:	Primary Antibodies
Applications:	IHC, WB
Recommended Dilution:	ELISA: 1:1;000. Western blot: 1:100~500. Immunohistochemistry on paraffin sections: 1:50~100.
Reactivity:	Human
Host:	Rabbit
Isotype:	Ig
Clonality:	Polyclonal
Immunogen:	KLH conjugated synthetic peptide between 197-227 amino acids from the Central region of human THUM3
Specificity:	This antibody detects THUMPD3 (Center).
Formulation:	PBS with 0.09% (W/V) sodium azide State: Aff - Purified State: Liquid Ig fraction
Concentration:	lot specific
Purification:	Protein A column followed by peptide affinity purification
Conjugation:	Unconjugated
Storage:	Store at 2 - 8 °C for up to six months or (in aliquots) at -20 °C for longer. Avoid repeated freezing and thawing.
Stability:	Shelf life: one year from despatch.
Gene Name:	THUMP domain containing 3
Database Link:	Entrez Gene 25917 Human Q9BV44
Synonyms:	THUMP domain-containing protein 3
Note:	Molecular Weight: 57003 Da



[View online »](#)

Product images:

THUM3 Antibody (Center) western blot analysis in A375 cell line lysates (35 ug/lane). This demonstrates the THUM3 antibody detected the THUM3 protein (arrow).



THUM3 Antibody (Center) immunohistochemistry analysis in formalin fixed and paraffin embedded human skeletal muscle followed by peroxidase conjugation of the secondary antibody and DAB staining. This data demonstrates the use of the THUM3 Antibody (Center) for immunohistochemistry. Clinical relevance has not been evaluated.