

Product datasheet for **AP54243PU-N**

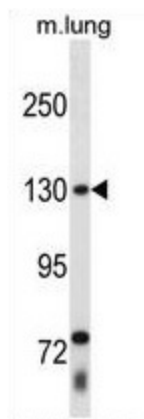
THRAP3 (C-term) Rabbit Polyclonal Antibody

Product data:

Product Type:	Primary Antibodies
Applications:	WB
Recommended Dilution:	ELISA: 1:1;000. Western blot: 1:100~500.
Reactivity:	Human
Host:	Rabbit
Isotype:	Ig
Clonality:	Polyclonal
Immunogen:	KLH conjugated synthetic peptide between 926-955 amino acids from the C-terminal region of human THRAP3
Specificity:	This antibody detects THRAP3 / TRAP150 (C-term).
Formulation:	PBS with 0.09% (W/V) sodium azide State: Aff - Purified State: Liquid Ig fraction
Concentration:	lot specific
Purification:	Protein A column followed by peptide affinity purification
Conjugation:	Unconjugated
Storage:	Store at 2 - 8 °C for up to six months or (in aliquots) at -20 °C for longer. Avoid repeated freezing and thawing.
Stability:	Shelf life: one year from despatch.
Gene Name:	thyroid hormone receptor associated protein 3
Database Link:	Entrez Gene 9967 Human Q9Y2W1
Background:	THRAP3 plays a role in transcriptional coactivation.
Synonyms:	FLJ22082; MGC133082; MGC133083; TRAP150
Note:	Molecular Weight: 108666 Da
Protein Families:	Druggable Genome, Transcription Factors



[View online »](#)

Product images:

THRAP3 Antibody (C-term) western blot analysis in mouse lung tissue lysates (35 ug/lane). This demonstrates the THRAP3 antibody detected the THRAP3 protein (arrow).