

Product datasheet for **AP54241PU-N**

Aly (ALYREF) (Center) Rabbit Polyclonal Antibody

Product data:

Product Type:	Primary Antibodies
Applications:	WB
Recommended Dilution:	ELISA: 1:1;000. Western blot: 1:100~500.
Reactivity:	Human
Host:	Rabbit
Isotype:	Ig
Clonality:	Polyclonal
Immunogen:	KLH conjugated synthetic peptide between 59-89 amino acids from the Central region of human THOC4
Specificity:	This antibody detects THOC4 / ALY (Center).
Formulation:	PBS with 0.09% (W/V) sodium azide State: Aff - Purified State: Liquid Ig fraction
Concentration:	lot specific
Purification:	Protein A column followed by peptide affinity purification
Conjugation:	Unconjugated
Storage:	Store at 2 - 8 °C for up to six months or (in aliquots) at -20 °C for longer. Avoid repeated freezing and thawing.
Stability:	Shelf life: one year from despatch.
Gene Name:	Aly/REF export factor
Database Link:	Entrez Gene 10189 Human Q86V81
Background:	THOC4 is a heat stable, nuclear protein and functions as a molecular chaperone. It is thought to regulate dimerization, DNA binding, and transcriptional activity of basic region-leucine zipper (bZIP) proteins.
Synonyms:	THO4, BEF

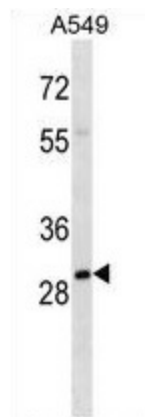


[View online »](#)

Note: **Molecular Weight:** 26888 Da

Protein Pathways: Spliceosome

Product images:



THOC4 Antibody (Center) western blot analysis in A549 cell line lysates (35 ug/lane). This demonstrates the THOC4 antibody detected the THOC4 protein (arrow).