

## Product datasheet for **AP54240PU-N**

### Nuclear Matrix Protein p84 (THOC1) (C-term) Rabbit Polyclonal Antibody

#### Product data:

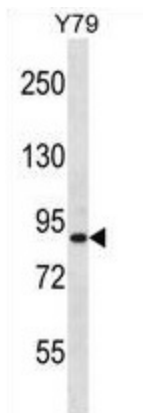
Product Type:	Primary Antibodies
Applications:	WB
Recommended Dilution:	ELISA: 1:1;000. Western blot: 1:100~500.
Reactivity:	Human
Host:	Rabbit
Isotype:	Ig
Clonality:	Polyclonal
Immunogen:	KLH conjugated synthetic peptide between 540-570 amino acids from the C-terminal region of human THOC1
Specificity:	This antibody detects THOC1 (C-term).
Formulation:	PBS with 0.09% (W/V) sodium azide State: Aff - Purified State: Liquid Ig fraction
Concentration:	lot specific
Purification:	Protein A column followed by peptide affinity purification
Conjugation:	Unconjugated
Storage:	Store at 2 - 8 °C for up to six months or (in aliquots) at -20 °C for longer. Avoid repeated freezing and thawing.
Stability:	Shelf life: one year from despatch.
Gene Name:	THO complex 1
Database Link:	<a href="#">Entrez Gene 9984 Human Q96FV9</a>
Background:	HPR1 is part of the TREX (transcription/export) complex, which includes TEX1 (MIM 606929), THO2 (MIM 300395), ALY (MIM 604171), and UAP56 (MIM 142560).
Synonyms:	THO complex subunit 1, Tho1, p84N5, TREX84, HPR1
Note:	<b>Molecular Weight:</b> 75666 Da



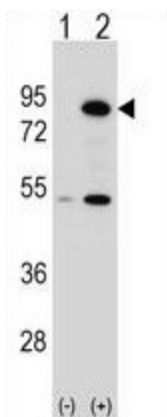
[View online »](#)

Protein Pathways: Proteasome, Spliceosome

**Product images:**



THOC1 Antibody (C-term) western blot analysis in Y79 cell line lysates (35 ug/lane). This demonstrates the THOC1 antibody detected the THOC1 protein (arrow).



Western blot analysis of THOC1 (arrow) using rabbit polyclonal THOC1 Antibody (C-term). 293 cell lysates (2 ug/lane) either nontransfected (Lane 1) or transiently transfected (Lane 2) with the THOC1 gene.