

## Product datasheet for **AP54237PU-N**

### THAP11 (N-term) Rabbit Polyclonal Antibody

#### Product data:

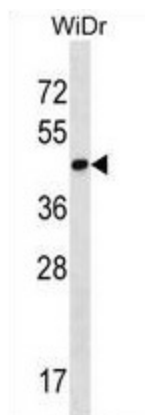
Product Type:	Primary Antibodies
Applications:	WB
Recommended Dilution:	ELISA: 1:1;000. Western blot: 1:100~500.
Reactivity:	Human
Host:	Rabbit
Isotype:	Ig
Clonality:	Polyclonal
Immunogen:	KLH conjugated synthetic peptide between 66-96 amino acids from the N-terminal region of human THAP11
Specificity:	This antibody detects THAP11 (N-term).
Formulation:	PBS with 0.09% (W/V) sodium azide State: Aff - Purified State: Liquid Ig fraction
Concentration:	lot specific
Purification:	Protein A column followed by peptide affinity purification
Conjugation:	Unconjugated
Storage:	Store at 2 - 8 °C for up to six months or (in aliquots) at -20 °C for longer. Avoid repeated freezing and thawing.
Stability:	Shelf life: one year from despatch.
Gene Name:	THAP domain containing 11
Database Link:	<a href="#">Entrez Gene 57215 Human Q96EK4</a>
Background:	The protein encoded by this gene contains a THAP domain, which is a conserved DNA-binding domain that has striking similarity to the site-specific DNA-binding domain (DBD) of Drosophila P element transposases.
Synonyms:	HRIHFB2206



[View online »](#)

Note: **Molecular Weight:** 34455 Da

**Product images:**



THAP11 Antibody (N-term) western blot analysis in WiDr cell line lysates (35 ug/lane). This demonstrates the THAP11 antibody detected the THAP11 protein (arrow).