

## Product datasheet for **AP54235PU-N**

### TGIF (TGIF1) (Center) Rabbit Polyclonal Antibody

#### Product data:

Product Type:	Primary Antibodies
Applications:	WB
Recommended Dilution:	ELISA: 1:1;000. Western blot: 1:50~100.
Reactivity:	Human, Mouse
Host:	Rabbit
Isotype:	Ig
Clonality:	Polyclonal
Immunogen:	KLH conjugated synthetic peptide between 215-245 amino acids from the Central region of human TGIF1
Specificity:	This antibody detects TGIF1 (Center).
Formulation:	PBS with 0.09% (W/V) sodium azide State: Purified State: Liquid Ig fraction
Concentration:	lot specific
Purification:	Saturated Ammonium Sulfate (SAS) precipitation followed by dialysis against PBS
Conjugation:	Unconjugated
Storage:	Store at 2 - 8 °C for up to six months or (in aliquots) at -20 °C for longer. Avoid repeated freezing and thawing.
Stability:	Shelf life: one year from despatch.
Gene Name:	TGFB induced factor homeobox 1
Database Link:	<a href="#">Entrez Gene 21815 Mouse</a> <a href="#">Entrez Gene 7050 Human</a> <a href="#">Q15583</a>



[View online »](#)

**Background:**

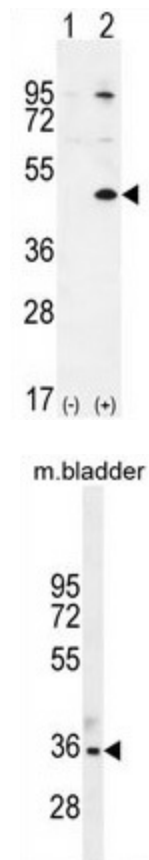
The protein encoded by this gene is a member of the three-amino acid loop extension (TALE) superclass of atypical homeodomains. TALE homeobox proteins are highly conserved transcription regulators. This particular homeodomain binds to a previously characterized retinoid X receptor responsive element from the cellular retinol-binding protein II promoter. In addition to its role in inhibiting 9-cis-retinoic acid-dependent RXR alpha transcription activation of the retinoic acid responsive element, the protein is an active transcriptional co-repressor of SMAD2 and may participate in the transmission of nuclear signals during development and in the adult. Mutations in this gene are associated with holoprosencephaly type 4, which is a structural anomaly of the brain. Alternative splicing has been observed at this locus and eight variants, encoding four distinct isoforms, are described.

**Synonyms:**

TGIF

**Note:****Molecular Weight:** 43013 Da**Protein Families:**

Druggable Genome, Stem cell - Pluripotency, Stem cell relevant signaling - TGFb/BMP signaling pathway, Transcription Factors

**Product images:**

Western blot analysis of TGIF1 (arrow) using rabbit polyclonal TGIF1 Antibody (Center L223). 293 cell lysates (2 ug/lane) either nontransfected (Lane 1) or transiently transfected (Lane 2) with the TGIF1 gene.

TGIF1 Antibody (Center L223) western blot analysis in mouse bladder tissue lysates (35 ug/lane). This demonstrates the TGIF1 antibody detected the TGIF1 protein (arrow).