

Product datasheet for **AP54232PU-N**

TGFBI (N-term) Rabbit Polyclonal Antibody

Product data:

Product Type:	Primary Antibodies
Applications:	WB
Recommended Dilution:	ELISA: 1:1;000. Western blot: 1:100~500.
Reactivity:	Human
Host:	Rabbit
Isotype:	Ig
Clonality:	Polyclonal
Immunogen:	KLH conjugated synthetic peptide between 105-135 amino acids from the N-terminal region of human TGFBI
Specificity:	This antibody detects TGFBI / BIGH3 (N-term).
Formulation:	PBS with 0.09% (W/V) sodium azide State: Aff - Purified State: Liquid Ig fraction
Concentration:	lot specific
Purification:	Protein A column followed by peptide affinity purification
Conjugation:	Unconjugated
Storage:	Store at 2 - 8 °C for up to six months or (in aliquots) at -20 °C for longer. Avoid repeated freezing and thawing.
Stability:	Shelf life: one year from despatch.
Gene Name:	transforming growth factor beta induced
Database Link:	Entrez Gene 7045 Human Q15582



[View online »](#)

Background:

This gene encodes an RGD-containing protein that binds to type I, II and IV collagens. The RGD motif is found in many extracellular matrix proteins modulating cell adhesion and serves as a ligand recognition sequence for several integrins. This protein plays a role in cell-collagen interactions and may be involved in endochondrial bone formation in cartilage. The protein is induced by transforming growth factor-beta and acts to inhibit cell adhesion. Mutations in this gene are associated with multiple types of corneal dystrophy.

Synonyms:

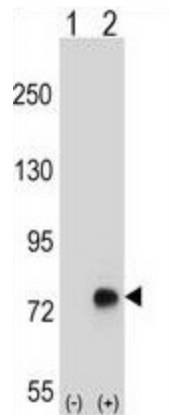
Beta ig-h3, RGD-CAP, Kerato-epithelin

Note:

Molecular Weight: 74681 Da

Protein Families:

Druggable Genome, Secreted Protein, Transmembrane

Product images:

Western blot analysis of TGFB1 (arrow) using rabbit polyclonal TGFB1 Antibody (N-term). 293 cell lysates (2 ug/lane) either nontransfected (Lane 1) or transiently transfected (Lane 2) with the TGFB1 gene.