

Product datasheet for **AP54230PU-N**

TGF beta 1 (TGFB1) (N-term) Rabbit Polyclonal Antibody

Product data:

Product Type:	Primary Antibodies
Applications:	IF, IHC, WB
Recommended Dilution:	ELISA: 1/1,000. Western blot: 1/1,000. Immunohistochemistry on Paraffin Sections: 1/10-1/50. Immunofluorescence: 1/10-1/50.
Reactivity:	Human, Mouse
Host:	Rabbit
Isotype:	Ig
Clonality:	Polyclonal
Immunogen:	KLH conjugated synthetic peptide between 22-50 amino acids from the N-terminal region of Human TGFB1.
Specificity:	This antibody detects TGF-beta-1 (TGFB1) (N-term).
Formulation:	PBS with 0.09% (W/V) Sodium Azide State: Aff - Purified State: Liquid purified Ig fraction
Concentration:	lot specific
Purification:	Protein A column followed by peptide affinity purification
Conjugation:	Unconjugated
Storage:	Store undiluted at 2-8°C for one month or (in aliquots) at -20°C for longer. Avoid repeated freezing and thawing.
Stability:	Shelf life: one year from despatch.
Gene Name:	transforming growth factor beta 1
Database Link:	Entrez Gene 21803 Mouse Entrez Gene 7040 Human P01137



[View online »](#)

Background: TGFB1 is a member of the transforming growth factor beta (TGFB) family of cytokines, which are multifunctional peptides that regulate proliferation, differentiation, adhesion, migration, and other functions in many cell types. Many cells have TGFB receptors, and the protein positively and negatively regulates many other growth factors. The secreted protein is cleaved into a latency-associated peptide (LAP) and a mature TGFB1 peptide, and is found in either a latent form composed of a TGFB1 homodimer, a LAP homodimer, and a latent TGFB1-binding protein, or in an active form composed of a TGFB1 homodimer. The mature peptide may also form heterodimers with other TGFB family members. This gene is frequently upregulated in tumor cells, and mutations in this gene result in Camurati-Engelmann disease.

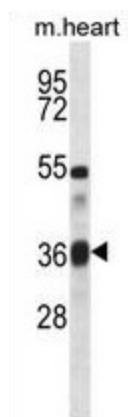
Synonyms: TGFB, Transforming growth factor beta-1, TGF-beta-1

Note: **Molecular Weight:** 44341 Da

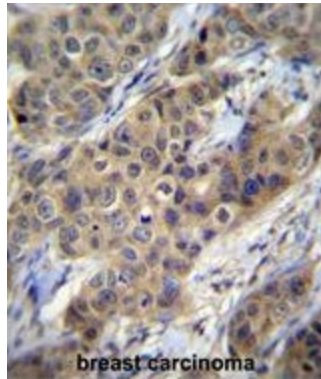
Protein Families: Druggable Genome, ES Cell Differentiation/IPS, Secreted Protein, Transcription Factors

Protein Pathways: Cell cycle, Chronic myeloid leukemia, Colorectal cancer, Cytokine-cytokine receptor interaction, Dilated cardiomyopathy, Hypertrophic cardiomyopathy (HCM), MAPK signaling pathway, Pancreatic cancer, Pathways in cancer, Renal cell carcinoma, TGF-beta signaling pathway

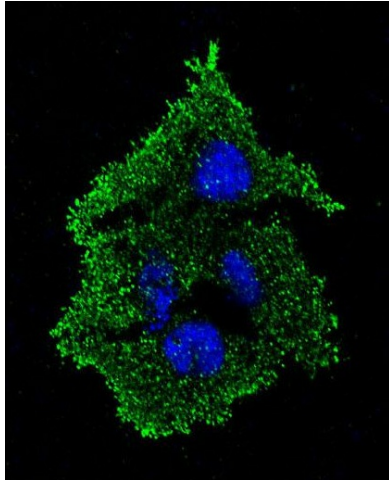
Product images:



TGFB1 Antibody (N-term) western blot analysis in mouse heart tissue lysates (35 ug/lane). This demonstrates the TGFB1 antibody detected the TGFB1 protein (arrow).



TGFB1 Antibody (N-term) immunohistochemistry analysis in formalin fixed and paraffin embedded human breast carcinoma followed by peroxidase conjugation of the secondary antibody and DAB staining. This data demonstrates the use of TGFB1 Antibody (N-term) for immunohistochemistry. Clinical relevance has not been evaluated.



Confocal immunofluorescent analysis of TGFB1 Antibody (N-term) with HepG2 cell followed by Alexa Fluor 488-conjugated goat anti-rabbit IgG (green). DAPI was used to stain the cell nuclear (blue).