

Product datasheet for **AP54229PU-N**

Transferrin Receptor 2 (TFR2) (C-term) Rabbit Polyclonal Antibody

Product data:

Product Type:	Primary Antibodies
Applications:	WB
Recommended Dilution:	Peptide ELISA: 1/1000. Western blot: 1/1000.
Reactivity:	Human
Host:	Rabbit
Isotype:	Ig
Clonality:	Polyclonal
Immunogen:	KLH conjugated synthetic peptide between 674-703 amino acids from the C-terminal region of Human TFR2
Specificity:	This antibody detects Human TFR2 (C-term). Other species not tested.
Formulation:	PBS State: Aff - Purified State: Liquid purified Ig fraction Preservative: 0.09% (W/V) Sodium Azide
Concentration:	lot specific
Purification:	Protein A column followed by peptide affinity purification
Conjugation:	Unconjugated
Storage:	Store undiluted at 2-8°C for one month or (in aliquots) at -20°C for longer. Avoid repeated freezing and thawing.
Stability:	Shelf life: one year from despatch.
Predicted Protein Size:	88755 Da (Calculated)
Gene Name:	transferrin receptor 2
Database Link:	Entrez Gene 7036 Human Q9UP52



[View online »](#)

Background:

This gene is a member of the transferrin receptor-like family and encodes a single-pass type II membrane protein with a protease associated (PA) domain, an M28 peptidase domain and a transferrin receptor-like dimerization domain. This protein mediates cellular uptake of transferrin-bound iron and mutations in this gene have been associated with hereditary hemochromatosis type III. Alternatively spliced variants which encode different protein isoforms have been described; however, not all variants have been fully characterized.

Function: Mediates cellular uptake of transferrin-bound iron in a non-iron dependent manner. May be involved in iron metabolism, hepatocyte function and erythrocyte differentiation.

Cellular Location: Cell membrane; Single-pass type II membrane protein.

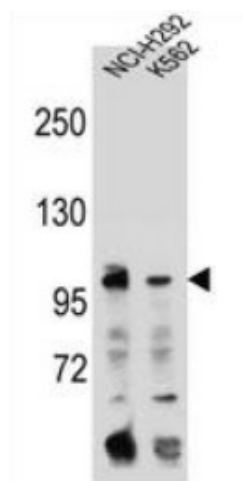
Tissue Location: Predominantly expressed in liver. While the alpha form is also expressed in spleen, lung, muscle, prostate and peripheral blood mononuclear cells, the beta form is expressed in all tissues tested, albeit weakly.

Synonyms:

Transferrin receptor protein 2

Protein Families:

Druggable Genome, Protease, Transmembrane

Product images:

Western blot analysis using TFR2 Antibody (C-term) in NCI-H292, K562 cell line lysates (35ug/lane). This demonstrates the TFR2 antibody detected the TFR2 protein (arrow).