

## Product datasheet for **AP54226PU-N**

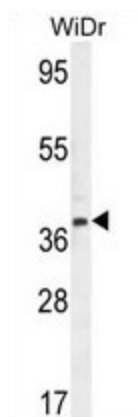
### TFB2M (C-term) Rabbit Polyclonal Antibody

#### Product data:

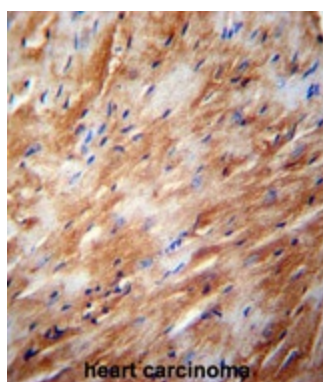
Product Type:	Primary Antibodies
Applications:	IHC, WB
Recommended Dilution:	ELISA: 1:1;000. Western blot: 1:100~500. Immunohistochemistry on paraffin sections: 1:50~100.
Reactivity:	Human
Host:	Rabbit
Isotype:	Ig
Clonality:	Polyclonal
Immunogen:	KLH conjugated synthetic peptide between 368-396 amino acids from the C-terminal region of human TFB2M
Specificity:	This antibody detects TFB2M (C-term).
Formulation:	PBS with 0.09% (W/V) sodium azide State: Aff - Purified State: Liquid Ig fraction
Concentration:	lot specific
Purification:	Protein A column followed by peptide affinity purification
Conjugation:	Unconjugated
Storage:	Store at 2 - 8 °C for up to six months or (in aliquots) at -20 °C for longer. Avoid repeated freezing and thawing.
Stability:	Shelf life: one year from despatch.
Gene Name:	transcription factor B2, mitochondrial
Database Link:	<a href="#">Entrez Gene 64216 Human Q9H5Q4</a>
Synonyms:	Dimethyladenosine transferase 2 mitochondrial, mtTFB2, NS5ATP5
Note:	<b>Molecular Weight:</b> 45349 Da
Protein Families:	Transcription Factors



[View online »](#)

**Product images:**

TFB2M Antibody (C-term) western blot analysis in WiDr cell line lysates (35 ug/lane). This demonstrates the TFB2M antibody detected the TFB2M protein (arrow).



TFB2M Antibody (C-term) immunohistochemistry analysis in formalin fixed and paraffin embedded human heart carcinoma followed by peroxidase conjugation of the secondary antibody and DAB staining. This data demonstrates the use of the TFB2M Antibody (C-term) for immunohistochemistry. Clinical relevance has not been evaluated.