

## Product datasheet for **AP54222PU-N**

### TEX13B (C-term) Rabbit Polyclonal Antibody

#### Product data:

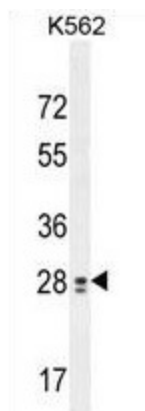
Product Type:	Primary Antibodies
Applications:	FC, IHC, WB
Recommended Dilution:	ELISA: 1:1;000. Western blot: 1:100~500. Immunohistochemistry on paraffin sections: 1:50~100. Flow cytometry: 1:10~50.
Reactivity:	Human
Host:	Rabbit
Isotype:	Ig
Clonality:	Polyclonal
Immunogen:	KLH conjugated synthetic peptide between 279-309 amino acids from the C-terminal region of human TEX13B
Specificity:	This antibody detects TEX13B (C-term).
Formulation:	PBS with 0.09% (W/V) sodium azide State: Aff - Purified State: Liquid Ig fraction
Concentration:	lot specific
Purification:	Protein A column followed by peptide affinity purification
Conjugation:	Unconjugated
Storage:	Store at 2 - 8 °C for up to six months or (in aliquots) at -20 °C for longer. Avoid repeated freezing and thawing.
Stability:	Shelf life: one year from despatch.
Gene Name:	testis expressed 13B
Database Link:	<a href="#">Entrez Gene 56156 Human</a> <a href="#">Q9BXU2</a>
Background:	This gene is similar to a mouse gene that is expressed in the testis.
Synonyms:	TGC3B; TSGA5



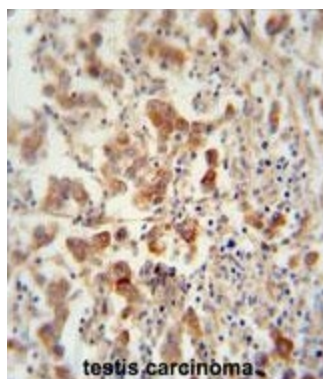
[View online »](#)

Note: **Molecular Weight:** 33967 Da

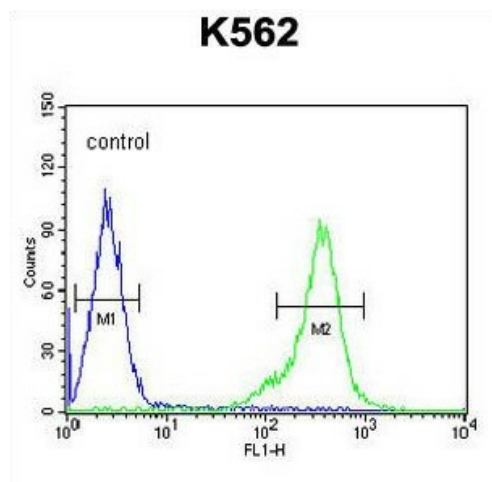
## Product images:



TEX13B Antibody (C-term) western blot analysis in K562 cell line lysates (35 ug/lane). This demonstrates the TEX13B antibody detected the TEX13B protein (arrow).



TEX13B antibody (C-term) immunohistochemistry analysis in formalin fixed and paraffin embedded human testis carcinoma followed by peroxidase conjugation of the secondary antibody and DAB staining. This data demonstrates the use of the TEX13B antibody (C-term) for immunohistochemistry. Clinical relevance has not been evaluated.



TEX13B Antibody (C-term) flow cytometric analysis of K562 cells (right histogram) compared to a negative control cell (left histogram). FITC-conjugated goat-anti-rabbit secondary antibodies were used for the analysis.