

## Product datasheet for **AP54220PU-N**

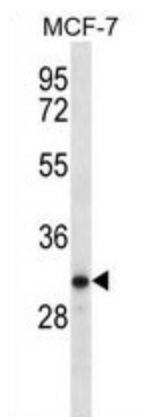
### PRSS41 (Center) Rabbit Polyclonal Antibody

#### Product data:

Product Type:	Primary Antibodies
Applications:	WB
Recommended Dilution:	ELISA: 1:1;000. Western blot: 1:100~500.
Reactivity:	Human
Host:	Rabbit
Isotype:	Ig
Clonality:	Polyclonal
Immunogen:	KLH conjugated synthetic peptide between 105-133 amino acids from the Central region of human TESSP1
Specificity:	This antibody detects TESSP1 (Center).
Formulation:	PBS with 0.09% (W/V) sodium azide State: Aff - Purified State: Liquid Ig fraction
Concentration:	lot specific
Purification:	Protein A column followed by peptide affinity purification
Conjugation:	Unconjugated
Storage:	Store at 2 - 8 °C for up to six months or (in aliquots) at -20 °C for longer. Avoid repeated freezing and thawing.
Stability:	Shelf life: one year from despatch.
Gene Name:	protease, serine 41
Database Link:	<a href="#">Entrez Gene 360226 Human Q7RTY9</a>
Synonyms:	Putative serine protease 41, PRSS41
Note:	<b>Molecular Weight:</b> 35078 Da
Protein Families:	Druggable Genome



[View online »](#)

**Product images:**

TESSP1 Antibody (Center) western blot analysis in MCF-7 cell line lysates (35 ug/lane). This demonstrates the TESSP1 antibody detected the TESSP1 protein (arrow).