

Product datasheet for **AP54219PU-N**

TESK1 (Center) Rabbit Polyclonal Antibody

Product data:

| | |
|-----------------------|--|
| Product Type: | Primary Antibodies |
| Applications: | WB |
| Recommended Dilution: | ELISA: 1:1;000. Western blot: 1:100~500. |
| Reactivity: | Human |
| Host: | Rabbit |
| Isotype: | Ig |
| Clonality: | Polyclonal |
| Immunogen: | KLH conjugated synthetic peptide between 186-215 amino acids from the Central region of human TESK1 |
| Specificity: | This antibody detects TESK1 (Center). |
| Formulation: | PBS with 0.09% (W/V) sodium azide State: Aff - Purified State: Liquid Ig fraction |
| Concentration: | lot specific |
| Purification: | Protein A column followed by peptide affinity purification |
| Conjugation: | Unconjugated |
| Storage: | Store at 2 - 8 °C for up to six months or (in aliquots) at -20 °C for longer. Avoid repeated freezing and thawing. |
| Stability: | Shelf life: one year from despatch. |
| Gene Name: | testis-specific kinase 1 |
| Database Link: | Entrez Gene 7016 Human Q15569 |



[View online »](#)

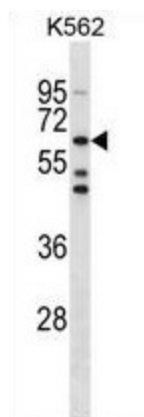
Background: This gene product is a serine/threonine protein kinase that contains an N-terminal protein kinase domain and a C-terminal proline-rich domain. Its protein kinase domain is most closely related to those of the LIM motif-containing protein kinases (LIMKs). The encoded protein can phosphorylate myelin basic protein and histone in vitro. The testicular germ cell-specific expression and developmental pattern of expression of the mouse gene suggests that this gene plays an important role at and after the meiotic phase of spermatogenesis.

Synonyms: Testicular protein kinase 1

Note: **Molecular Weight:** 67684 Da

Protein Families: Druggable Genome, Protein Kinase

Product images:



TESK1 Antibody (Center) western blot analysis in K562 cell line lysates (35 ug/lane). This demonstrates the TESK1 antibody detected the TESK1 protein (arrow).