

Product datasheet for **AP54217PU-N**

TEKT5 (Center) Rabbit Polyclonal Antibody

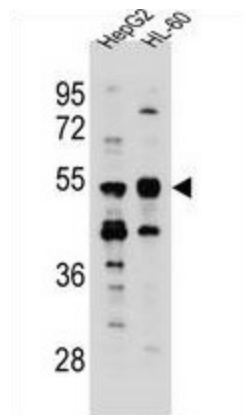
Product data:

Product Type:	Primary Antibodies
Applications:	IHC, WB
Recommended Dilution:	ELISA: 1:1;000. Western blot: 1:100~500. Immunohistochemistry on paraffin sections: 1:10~50.
Reactivity:	Human
Host:	Rabbit
Isotype:	Ig
Clonality:	Polyclonal
Immunogen:	KLH conjugated synthetic peptide between 222-252 amino acids from the Central region of human TEKT5
Specificity:	This antibody detects TEKT5 (Center).
Formulation:	PBS with 0.09% (W/V) sodium azide State: Aff - Purified State: Liquid Ig fraction
Concentration:	lot specific
Purification:	Protein A column followed by peptide affinity purification
Conjugation:	Unconjugated
Storage:	Store at 2 - 8 °C for up to six months or (in aliquots) at -20 °C for longer. Avoid repeated freezing and thawing.
Stability:	Shelf life: one year from despatch.
Gene Name:	tektin 5
Database Link:	Entrez Gene 146279 Human Q96M29
Background:	Structural component of ciliary and flagellar microtubules. Forms filamentous polymers in the walls of ciliary and flagellar microtubules (By similarity).
Synonyms:	TEKT5

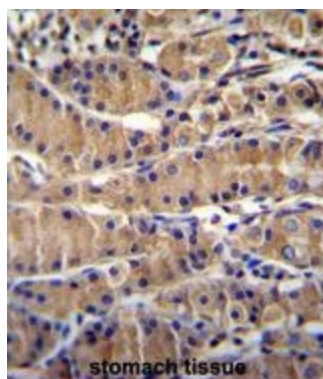
[View online »](#)

Note: **Molecular Weight:** 56294 Da

Product images:



TEKT5 Antibody (Center) western blot analysis in HepG2, HL-60 cell line lysates (35 ug/lane). This demonstrates the TEKT5 antibody detected the TEKT5 protein (arrow).



TEKT5 Antibody (Center) immunohistochemistry analysis in formalin fixed and paraffin embedded human stomach tissue followed by peroxidase conjugation of the secondary antibody and DAB staining. This data demonstrates the use of TEKT5 Antibody (Center) for immunohistochemistry. Clinical relevance has not been evaluated.