

Product datasheet for **AP54216PU-N**

TEKT1 (Center) Rabbit Polyclonal Antibody

Product data:

Product Type:	Primary Antibodies
Applications:	WB
Recommended Dilution:	ELISA: 1:1;000. Western blot: 1:100~500.
Reactivity:	Human
Host:	Rabbit
Isotype:	Ig
Clonality:	Polyclonal
Immunogen:	KLH conjugated synthetic peptide between 251-281 amino acids from the Central region of human TEKT1
Specificity:	This antibody detects Tektin-1 (TEKT1) (Center).
Formulation:	PBS with 0.09% (W/V) sodium azide State: Aff - Purified State: Liquid Ig fraction
Concentration:	lot specific
Purification:	Protein A column followed by peptide affinity purification
Conjugation:	Unconjugated
Storage:	Store at 2 - 8 °C for up to six months or (in aliquots) at -20 °C for longer. Avoid repeated freezing and thawing.
Stability:	Shelf life: one year from despatch.
Gene Name:	tektin 1
Database Link:	Entrez Gene 83659 Human Q969V4
Background:	This gene product belongs to the tektin family of proteins. Tektins comprise a family of filament-forming proteins that are coassembled with tubulins to form ciliary and flagellar microtubules. This gene is predominantly expressed in the testis and in mouse, tektin 1 mRNA was localized to the spermatocytes and round spermatids in the seminiferous tubules, indicating that it may play a role in spermatogenesis.

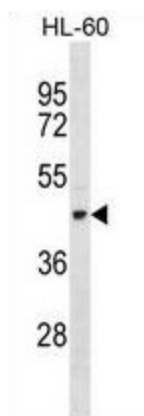


[View online »](#)

Synonyms: MT14

Note: **Molecular Weight:** 48283 Da

Product images:



TEKT1 Antibody (Center) western blot analysis in HL-60 cell line lysates (35 ug/lane). This demonstrates the TEKT1 antibody detected the TEKT1 protein (arrow).