

## Product datasheet for **AP54215PU-N**

### **TECTB (N-term) Rabbit Polyclonal Antibody**

#### **Product data:**

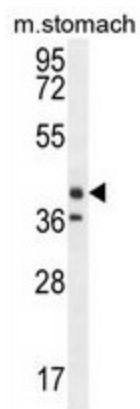
<b>Product Type:</b>	Primary Antibodies
<b>Applications:</b>	IHC, WB
<b>Recommended Dilution:</b>	ELISA: 1:1;000. Western blot: 1:100~500. Immunohistochemistry on paraffin sections: 1:50~100.
<b>Reactivity:</b>	Human, Mouse
<b>Host:</b>	Rabbit
<b>Isotype:</b>	Ig
<b>Clonality:</b>	Polyclonal
<b>Immunogen:</b>	KLH conjugated synthetic peptide between 61-91 amino acids from the N-terminal region of human TECTB
<b>Specificity:</b>	This antibody detects TECTB (N-term).
<b>Formulation:</b>	PBS with 0.09% (W/V) sodium azide State: Aff - Purified State: Liquid Ig fraction
<b>Concentration:</b>	lot specific
<b>Purification:</b>	Protein A column followed by peptide affinity purification
<b>Conjugation:</b>	Unconjugated
<b>Storage:</b>	Store at 2 - 8 °C for up to six months or (in aliquots) at -20 °C for longer. Avoid repeated freezing and thawing.
<b>Stability:</b>	Shelf life: one year from despatch.
<b>Gene Name:</b>	tectorin beta
<b>Database Link:</b>	<a href="#">Entrez Gene 6975 Human Q96PL2</a>
<b>Background:</b>	The genes for alpha-tectorin (MIM 602574) and beta-tectorin encode the major noncollagenous proteins of the tectorial membrane of the cochlea.
<b>Synonyms:</b>	Beta-tectorin



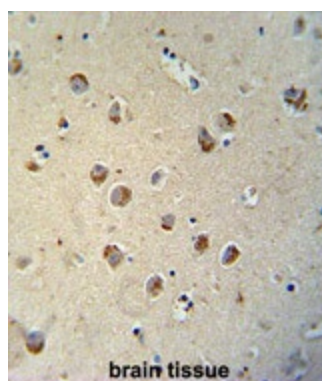
[View online »](#)

Note: **Molecular Weight:** 36956 Da

### Product images:



TECTB Antibody (N-term) western blot analysis in mouse stomach tissue lysates (35 ug/lane). This demonstrates the EK12 antibody detected the EK12 protein (arrow).



TECTB antibody (N-term) immunohistochemistry analysis in formalin fixed and paraffin embedded human brain tissue followed by peroxidase conjugation of the secondary antibody and DAB staining. This data demonstrates the use of the TECTB antibody (N-term) for immunohistochemistry. Clinical relevance has not been evaluated.