

Product datasheet for **AP54214PU-N**

TEC (N-term) Rabbit Polyclonal Antibody

Product data:

Product Type:	Primary Antibodies
Applications:	WB
Recommended Dilution:	ELISA: 1/1;000. Western blot: 1/1000.
Reactivity:	Human
Host:	Rabbit
Isotype:	Ig
Clonality:	Polyclonal
Immunogen:	KLH conjugated synthetic peptide between 25-55 amino acids from the N-terminal region of Human TEC
Specificity:	This antibody detects Human TEC (N-term). Other species not tested.
Formulation:	PBS State: Aff - Purified State: Liquid purified Ig fraction Preservative: 0.09% (W/V) Sodium Azide
Concentration:	lot specific
Purification:	Protein A column followed by peptide affinity purification
Conjugation:	Unconjugated
Storage:	Store undiluted at 2-8°C for one month or (in aliquots) at -20°C for longer. Avoid repeated freezing and thawing.
Stability:	Shelf life: one year from despatch.
Predicted Protein Size:	73581 Da
Gene Name:	tec protein tyrosine kinase
Database Link:	Entrez Gene 7006 Human P42680



[View online »](#)

Background:

TEC belongs to the Tec family of non-receptor protein-tyrosine kinases containing a pleckstrin homology domain. Tec family kinases are involved in the intracellular signaling mechanisms of cytokine receptors, lymphocyte surface antigens, heterotrimeric G-protein coupled receptors, and integrin molecules. They are also key players in the regulation of the immune functions. Tec kinase is an integral component of T cell signaling and has a distinct role in T cell activation. This gene may be associated with myelodysplastic syndrome.

Synonyms:

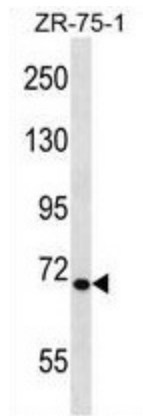
PSCTK4

Protein Families:

Druggable Genome, Protein Kinase

Protein Pathways:

T cell receptor signaling pathway

Product images:

TEC Antibody (N-term) western blot analysis in ZR-75-1 cell line lysates (35 ug/lane). This demonstrates the TEC antibody detected the TEC protein (arrow).