

Product datasheet for **AP54205PU-N**

TCL6 / TNG1 (C-term) Rabbit Polyclonal Antibody

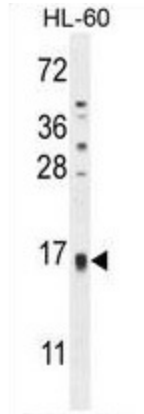
Product data:

Product Type:	Primary Antibodies
Applications:	FC, WB
Recommended Dilution:	ELISA: 1:1;000. Western blot: 1:100~500. Flow cytometry: 1:10~50.
Reactivity:	Human
Host:	Rabbit
Isotype:	Ig
Clonality:	Polyclonal
Immunogen:	KLH conjugated synthetic peptide between 104-134 amino acids from the C-terminal region of human TCL6
Specificity:	This antibody detects TCL6 / TNG1 (C-term).
Formulation:	PBS with 0.09% (W/V) sodium azide State: Aff - Purified State: Liquid Ig fraction
Concentration:	lot specific
Purification:	Protein A column followed by peptide affinity purification
Conjugation:	Unconjugated
Storage:	Store at 2 - 8 °C for up to six months or (in aliquots) at -20 °C for longer. Avoid repeated freezing and thawing.
Stability:	Shelf life: one year from despatch.
Database Link:	P56846
Note:	Molecular Weight: 15855 Da

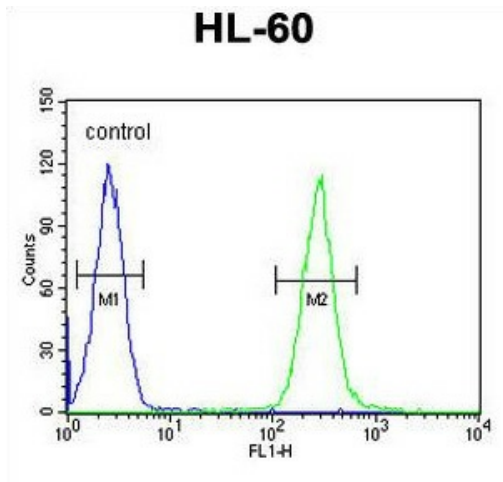


[View online »](#)

Product images:



TCL6 Antibody (C-term) (AP54205PU-N) western blot analysis in HL-60 cell line lysates (35 g/lane). This demonstrates the TCL6 antibody detected the TCL6 protein (arrow).



TCL6 Antibody (C-term) (AP54205PU-N) flow cytometric analysis of HL-60 cells (right histogram) compared to a negative control cell (left histogram). FITC-conjugated goat-anti-rabbit secondary antibodies were used for the analysis.