

Product datasheet for **AP54201PU-N**

TCF12 (N-term) Rabbit Polyclonal Antibody

Product data:

Product Type:	Primary Antibodies
Applications:	WB
Recommended Dilution:	ELISA: 1:1;000. Western blot: 1:100~500.
Reactivity:	Human
Host:	Rabbit
Isotype:	Ig
Clonality:	Polyclonal
Immunogen:	KLH conjugated synthetic peptide between 54-84 amino acids from the N-terminal region of human TCF12
Specificity:	This antibody detects TCF12 (N-term).
Formulation:	PBS State: Aff - Purified State: Liquid Ig fraction Preservative: 0.09% (W/V) sodium azide
Concentration:	lot specific
Purification:	Protein A column, followed by peptide affinity purification
Conjugation:	Unconjugated
Storage:	Store at 2 - 8 °C for up to six months or (in aliquots) at -20 °C for longer. Avoid repeated freezing and thawing.
Stability:	Shelf life: one year from despatch.
Gene Name:	transcription factor 12
Database Link:	Entrez Gene 6938 Human Q99081



[View online »](#)

Background:

The protein encoded by this gene is a member of the basic helix-loop-helix (bHLH) E-protein family that recognizes the consensus binding site (E-box) CANNTG. This encoded protein is expressed in many tissues, among them skeletal muscle, thymus, B- and T-cells, and may participate in regulating lineage-specific gene expression through the formation of heterodimers with other bHLH E-proteins. Several alternatively spliced transcript variants of this gene have been described, but the full-length nature of some of these variants has not been determined. [provided by RefSeq].

Synonyms:

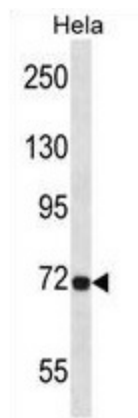
Transcription factor 12, HEB, HTF4, HTF-4

Note:

Molecular Weight: 72965 Da

Protein Families:

Druggable Genome, Transcription Factors

Product images:

TCF12 Antibody (N-term) western blot analysis in HeLa cell line lysates (35ug/lane). This demonstrates the TCF12 antibody detected the TCF12 protein (arrow).