

## Product datasheet for **AP54199PU-N**

### ELOC (C-term) Rabbit Polyclonal Antibody

#### Product data:

Product Type:	Primary Antibodies
Applications:	WB
Recommended Dilution:	ELISA: 1:1;000. Western blot: 1:100~500.
Reactivity:	Human
Host:	Rabbit
Isotype:	Ig
Clonality:	Polyclonal
Immunogen:	KLH conjugated synthetic peptide between 68-98 amino acids from the C-terminal region of human TCEB1
Specificity:	This antibody detects TCEB1 (C-term).
Formulation:	PBS State: Aff - Purified State: Liquid Ig fraction Preservative: 0.09% (W/V) sodium azide
Concentration:	lot specific
Conjugation:	Unconjugated
Storage:	Store at 2 - 8 °C for up to six months or (in aliquots) at -20 °C for longer. Avoid repeated freezing and thawing.
Stability:	Shelf life: one year from despatch.
Gene Name:	transcription elongation factor B subunit 1
Database Link:	<a href="#">Entrez Gene 6921 Human Q15369</a>



[View online »](#)

**Background:**

This gene encodes the protein elongin C, which is a subunit of the transcription factor B (SIII) complex. The SIII complex is composed of elongins A/A2, B and C. It activates elongation by RNA polymerase II by suppressing transient pausing of the polymerase at many sites within transcription units. Elongin A functions as the transcriptionally active component of the SIII complex, whereas elongins B and C are regulatory subunits. Elongin A2 is specifically expressed in the testis, and capable of forming a stable complex with elongins B and C. The von Hippel-Lindau tumor suppressor protein binds to elongins B and C, and thereby inhibits transcription elongation.

**Synonyms:**

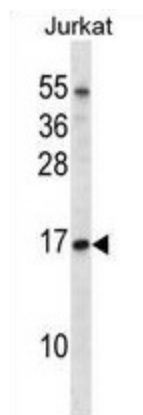
Elongin 15 kDa subunit, Elongin-C, Elongin C, EloC

**Note:****Molecular Weight:** 12473 Da**Protein Families:**

Druggable Genome, Transcription Factors

**Protein Pathways:**

Pathways in cancer, Renal cell carcinoma, Ubiquitin mediated proteolysis

**Product images:**

TCEB1 Antibody (C-term) western blot analysis in Jurkat cell line lysates (35 ug/lane). This demonstrates the TCEB1 antibody detected the TCEB1 protein (arrow).