

Product datasheet for **AP54196PU-N**

TCEA1 (Center) Rabbit Polyclonal Antibody

Product data:

Product Type:	Primary Antibodies
Applications:	WB
Recommended Dilution:	ELISA: 1:1;000. Western blot: 1:100~500.
Reactivity:	Human
Host:	Rabbit
Isotype:	Ig
Clonality:	Polyclonal
Immunogen:	KLH conjugated synthetic peptide between 97-126 amino acids from the Central region of human TCEA1
Specificity:	This antibody detects TCEA1 / TFIIIS (Center).
Formulation:	PBS State: Aff - Purified State: Liquid Ig fraction Preservative: 0.09% (W/V) sodium azide
Concentration:	lot specific
Purification:	Protein A column followed by peptide affinity purification
Conjugation:	Unconjugated
Storage:	Store at 2 - 8 °C for up to six months or (in aliquots) at -20 °C for longer. Avoid repeated freezing and thawing.
Stability:	Shelf life: one year from despatch.
Gene Name:	transcription elongation factor A1
Database Link:	Entrez Gene 6917 Human P23193

[View online »](#)

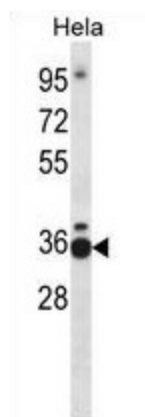
Background: Necessary for efficient RNA polymerase II transcription elongation past template-encoded arresting sites. The arresting sites in DNA have the property of trapping a certain fraction of elongating RNA polymerases that pass through, resulting in locked ternary complexes. Cleavage of the nascent transcript by S-II allows the resumption of elongation from the new 3'-terminus.

Synonyms: GTF2S

Note: **Molecular Weight:** 33970 Da

Protein Families: Transcription Factors

Product images:



TCEA1 Antibody (Center) western blot analysis in HeLa cell line lysates (35 ug/lane). This demonstrates the TCEA1 antibody detected the TCEA1 protein (arrow).