

Product datasheet for **AP54191PU-N**

SPATA48 (C-term) Rabbit Polyclonal Antibody

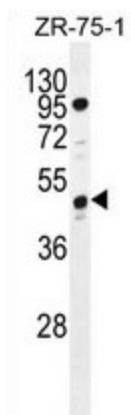
Product data:

Product Type:	Primary Antibodies
Applications:	WB
Recommended Dilution:	ELISA: 1:1;000. Western blot: 1:100~500.
Reactivity:	Human
Host:	Rabbit
Isotype:	Ig
Clonality:	Polyclonal
Immunogen:	KLH conjugated synthetic peptide between 417-438 amino acids from the C-terminal region of human tcag7.1071
Specificity:	This antibody detects tcag7.1071 (C-term).
Formulation:	PBS State: Aff - Purified State: Liquid Ig fraction Preservative: 0.09% (W/V) sodium azide
Concentration:	lot specific
Purification:	Protein A column followed by peptide affinity purification
Conjugation:	Unconjugated
Storage:	Store at 2 - 8 °C for up to six months or (in aliquots) at -20 °C for longer. Avoid repeated freezing and thawing.
Stability:	Shelf life: one year from despatch.
Predicted Protein Size:	49672 Da
Gene Name:	chromosome 7 open reading frame 72
Database Link:	Entrez Gene 100130988 Human A4D263
Synonyms:	C7orf72



[View online »](#)

Product images:



tcag7.1071 Antibody (C-term) western blot analysis in ZR-75-1 cell line lysates (35 ug/lane). This demonstrates the tcag7.1071 antibody detected the tcag7.1071 protein (arrow).