

Product datasheet for **AP54189PU-N**

TBX6 (C-term) Rabbit Polyclonal Antibody

Product data:

Product Type:	Primary Antibodies
Applications:	FC, WB
Recommended Dilution:	ELISA: 1:1;000. Western blot: 1:50~100. Flow cytometry: 1:10~50.
Reactivity:	Human
Host:	Rabbit
Isotype:	Ig
Clonality:	Polyclonal
Immunogen:	KLH conjugated synthetic peptide between 150-180 amino acids from the C-terminal region of human TBX6
Specificity:	This antibody detects TBX6 (C-term).
Formulation:	PBS State: Purified State: Liquid Ig fraction Preservative: 0.09% (W/V) sodium azide
Concentration:	lot specific
Purification:	Saturated Ammonium Sulfate (SAS) precipitation followed by dialysis against PBS
Conjugation:	Unconjugated
Storage:	Store at 2 - 8 °C for up to six months or (in aliquots) at -20 °C for longer. Avoid repeated freezing and thawing.
Stability:	Shelf life: one year from despatch.
Predicted Protein Size:	Molecular Weight: 47045 Da
Gene Name:	T-box 6
Database Link:	Entrez Gene 6911 Human O95947



[View online »](#)

Background:

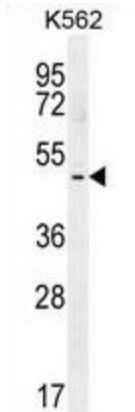
This gene is a member of a phylogenetically conserved family of genes that share a common DNA-binding domain, the T-box. T-box genes encode transcription factors involved in the regulation of developmental processes. Knockout studies in mice indicate that this gene is important for specification of paraxial mesoderm structures.

Synonyms:

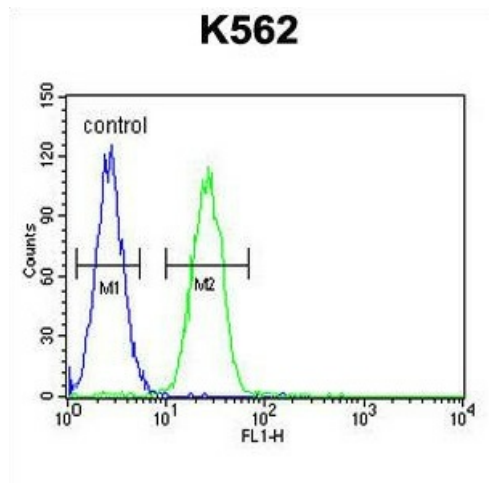
T-box protein 6

Protein Families:

Transcription Factors

Product images:


TBX6 Antibody (C-term) western blot analysis in K562 cell line lysates (35 ug/lane). This demonstrates the TBX6 antibody detected the TBX6 protein (arrow).



TBX6 Antibody (C-term) flow cytometric analysis of K562 cells (right histogram) compared to a negative control cell (left histogram). FITC-conjugated goat-anti-rabbit secondary antibodies were used for the analysis.