

## Product datasheet for **AP54181PU-N**

### TBL2 (N-term) Rabbit Polyclonal Antibody

#### Product data:

Product Type:	Primary Antibodies
Applications:	IHC, WB
Recommended Dilution:	<b>ELISA:</b> 1/1000. <b>Western Blot:</b> 1/100 - 1/500. <b>Immunohistochemistry on paraffin sections:</b> 1/10 - 1/50.
Reactivity:	Human
Host:	Rabbit
Isotype:	Ig
Clonality:	Polyclonal
Immunogen:	KLH conjugated synthetic peptide between 50-80 amino acids from the N-terminal region of human TBL2
Specificity:	This antibody reacts to TBL2.
Formulation:	PBS State: Aff - Purified State: Liquid purified Ig fraction Preservative: 0.09% (W/V) sodium azide
Concentration:	lot specific
Purification:	Affinity chromatography on Protein A
Conjugation:	Unconjugated
Storage:	Store the antibody undiluted at 2-8°C for one month or (in aliquots) at -20°C for longer. Avoid repeated freezing and thawing.
Stability:	Shelf life: one year from despatch.
Predicted Protein Size:	49798 Da
Gene Name:	transducin (beta)-like 2
Database Link:	<a href="#">Entrez Gene 26608 Human Q9Y4P3</a>



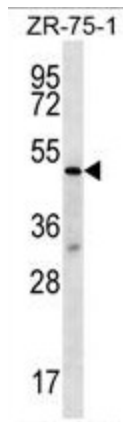
[View online »](#)

**Background:** This gene encodes a member of the beta-transducin protein family. Most proteins of the beta-transducin family are involved in regulatory functions. This protein is possibly involved in some intracellular signaling pathway. This gene is deleted in Williams-Beuren syndrome, a developmental disorder caused by deletion of multiple genes at 7q11.23.

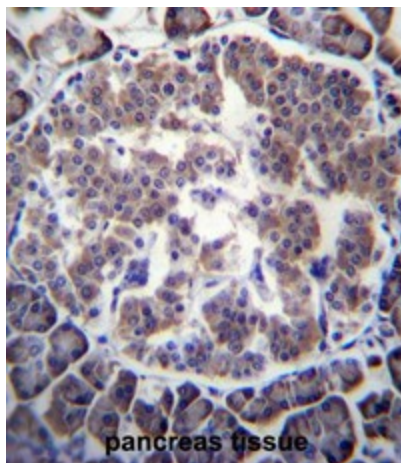
**Synonyms:** Transducin beta-like protein 2, WBSCR13

**Protein Families:** Transmembrane

**Product images:**



TBL2 Antibody (N-term) western blot analysis in ZR-75-1 cell line lysates (35ug/lane). This demonstrates the TBL2 antibody detected the TBL2 protein (arrow).



TBL2 Antibody (N-term) immunohistochemistry analysis in formalin fixed and paraffin embedded human pancreas tissue followed by peroxidase conjugation of the secondary antibody and DAB staining. This data demonstrates the use of TBL2 Antibody (N-term) for immunohistochemistry. Clinical relevance has not been evaluated.