

Product datasheet for **AP54180PU-N**

TBLR1 (TBL1XR1) (N-term) Rabbit Polyclonal Antibody

Product data:

Product Type:	Primary Antibodies
Applications:	WB
Recommended Dilution:	ELISA: 1/1000. Western Blot: 1/100 - 1/500.
Reactivity:	Human
Host:	Rabbit
Isotype:	Ig
Clonality:	Polyclonal
Immunogen:	KLH conjugated synthetic peptide between 108-137 amino acids from the N-terminal region of human TBL1XR1
Specificity:	This antibody reacts to TBL1XR1.
Formulation:	PBS State: Aff - Purified State: Liquid purified Ig fraction Preservative: 0.09% (W/V) sodium azide
Concentration:	lot specific
Purification:	Affinity chromatography on Protein A
Conjugation:	Unconjugated
Storage:	Store the antibody undiluted at 2-8°C for one month or (in aliquots) at -20°C for longer. Avoid repeated freezing and thawing.
Stability:	Shelf life: one year from despatch.
Predicted Protein Size:	55595 Da
Gene Name:	transducin (beta)-like 1 X-linked receptor 1
Database Link:	Entrez Gene 79718 Human Q9BZK7



[View online »](#)

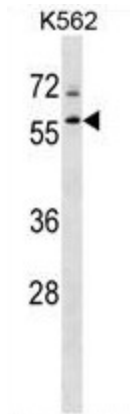
Background: TBL1XR1 has sequence similarity with members of the WD40 repeat-containing protein family. The WD40 group is a large family of proteins, which appear to have a regulatory function. It is believed that the WD40 repeats mediate protein-protein interactions and members of the family are involved in signal transduction, RNA processing, gene regulation, vesicular trafficking, cytoskeletal assembly and may play a role in the control of cytotypic differentiation.

Synonyms: TBL1-related protein 1, TBLR1, IRA1

Protein Families: Druggable Genome, Transcription Factors

Protein Pathways: Wnt signaling pathway

Product images:



TBL1XR1 Antibody (N-term) western blot analysis in K562 cell line lysates (35ug/lane). This demonstrates the TBL1XR1 antibody detected the TBL1XR1 protein (arrow).