

Product datasheet for **AP54179PU-N**

TBCEL (C-term) Rabbit Polyclonal Antibody

Product data:

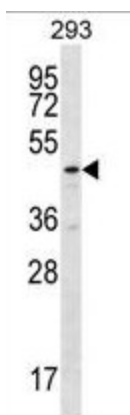
Product Type:	Primary Antibodies
Applications:	IHC, WB
Recommended Dilution:	ELISA: 1/1000. Western Blot: 1/100 - 1/500. Immunohistochemistry on paraffin sections: 1/10 - 1/50.
Reactivity:	Human
Host:	Rabbit
Isotype:	Ig
Clonality:	Polyclonal
Immunogen:	KLH conjugated synthetic peptide between 384-413 amino acids from the C-terminal region of human TBCEL
Specificity:	This antibody reacts to TBCEL.
Formulation:	PBS State: Aff - Purified State: Liquid purified Ig fraction Preservative: 0.09% (W/V) sodium azide
Concentration:	lot specific
Purification:	Affinity chromatography on Protein A
Conjugation:	Unconjugated
Storage:	Store the antibody undiluted at 2-8°C for one month or (in aliquots) at -20°C for longer. Avoid repeated freezing and thawing.
Stability:	Shelf life: one year from despatch.
Predicted Protein Size:	48195 Da
Gene Name:	tubulin folding cofactor E-like
Database Link:	Entrez Gene 219899 Human Q5QJ74
Synonyms:	Leucine-rich repeat-containing protein 35, Tubulin-specific chaperone cofactor E-like protein



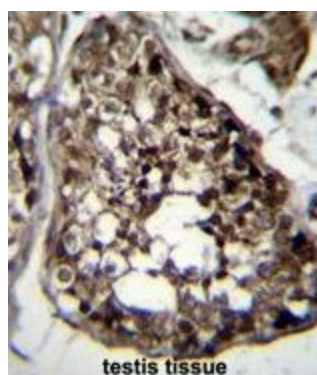
[View online »](#)

Protein Families: Druggable Genome

Product images:



TBCEL Antibody (C-term) western blot analysis in 293 cell line lysates (35ug/lane). This demonstrates the TBCEL antibody detected the TBCEL protein (arrow).



TBCEL Antibody (C-term) immunohistochemistry analysis in formalin fixed and paraffin embedded human testis tissue followed by peroxidase conjugation of the secondary antibody and DAB staining. This data demonstrates the use of TBCEL Antibody (C-term) for immunohistochemistry. Clinical relevance has not been evaluated.