

Product datasheet for **AP54178PU-N**

TBCE (Center) Rabbit Polyclonal Antibody

Product data:

Product Type:	Primary Antibodies
Applications:	WB
Recommended Dilution:	ELISA: 1/1000. Western Blot: 1/100 - 1/500.
Reactivity:	Human
Host:	Rabbit
Isotype:	Ig
Clonality:	Polyclonal
Immunogen:	KLH conjugated synthetic peptide between 371~400 amino acids from the Central region of human TBCE
Specificity:	This antibody reacts to TBCE.
Formulation:	PBS State: Aff - Purified State: Liquid purified Ig fraction Preservative: 0.09% (W/V) sodium azide
Concentration:	lot specific
Purification:	Affinity chromatography on Protein A
Conjugation:	Unconjugated
Storage:	Store the antibody undiluted at 2-8°C for one month or (in aliquots) at -20°C for longer. Avoid repeated freezing and thawing.
Stability:	Shelf life: one year from despatch.
Predicted Protein Size:	59346 Da
Gene Name:	tubulin folding cofactor E
Database Link:	Entrez Gene 6905 Human Q15813



[View online »](#)

Background:

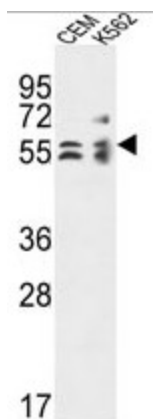
Cofactor E is one of four proteins (cofactors A, D, E, and C) involved in the pathway leading to correctly folded beta-tubulin from folding intermediates. Cofactors A and D are believed to play a role in capturing and stabilizing beta-tubulin intermediates in a quasi-native confirmation. Cofactor E binds to the cofactor D/beta-tubulin complex; interaction with cofactor C then causes the release of beta-tubulin polypeptides that are committed to the native state.

Synonyms:

HRD; KCS; KCS1; pac2

Protein Families:

Druggable Genome

Product images:

TBCE Antibody (Center) western blot analysis in CEM, K562 cell line lysates (35ug/lane). This demonstrates the TBCE antibody detected the TBCE protein (arrow).