

Product datasheet for **AP54175PU-N**

TBCCD1 (C-term) Rabbit Polyclonal Antibody

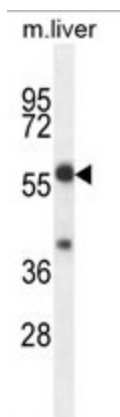
Product data:

Product Type:	Primary Antibodies
Applications:	WB
Recommended Dilution:	ELISA: 1/1000. Western Blot: 1/100 - 1/500.
Reactivity:	Human, Mouse
Host:	Rabbit
Isotype:	Ig
Clonality:	Polyclonal
Immunogen:	KLH conjugated synthetic peptide between 498-528 amino acids from the C-terminal region of human TBCCD1
Specificity:	This antibody reacts to TBCCD1.
Formulation:	PBS State: Aff - Purified State: Liquid purified Ig fraction Preservative: 0.09% (W/V) sodium azide
Concentration:	lot specific
Purification:	Affinity chromatography on Protein A
Conjugation:	Unconjugated
Storage:	Store the antibody undiluted at 2-8°C for one month or (in aliquots) at -20°C for longer. Avoid repeated freezing and thawing.
Stability:	Shelf life: one year from despatch.
Predicted Protein Size:	63530 Da
Gene Name:	TBCC domain containing 1
Database Link:	Entrez Gene 55171 Human Q9NVR7
Synonyms:	FLJ10560



[View online »](#)

Product images:



TBCCD1 Antibody (C-term) western blot analysis in mouse liver tissue lysates (35ug/lane). This demonstrates the TBCCD1 antibody detected the TBCCD1 protein (arrow).