

## Product datasheet for **AP54172PU-N**

### **TBC1D3H (N-term) Rabbit Polyclonal Antibody**

#### **Product data:**

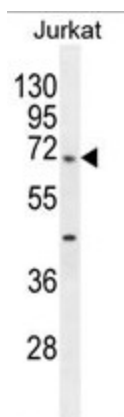
Product Type:	Primary Antibodies
Applications:	WB
Recommended Dilution:	<b>ELISA:</b> 1/1000. <b>Western Blot:</b> 1/100 - 1/500.
Reactivity:	Human
Host:	Rabbit
Isotype:	Ig
Clonality:	Polyclonal
Immunogen:	KLH conjugated synthetic peptide between 13-42 amino acids from the N-terminal region of human TBC1D3H
Specificity:	This antibody reacts to TBC1D3H.
Formulation:	PBS State: Aff - Purified State: Liquid purified Ig fraction Preservative: 0.09% (W/V) sodium azide
Concentration:	lot specific
Purification:	Affinity chromatography on Protein A
Conjugation:	Unconjugated
Storage:	Store the antibody undiluted at 2-8°C for one month or (in aliquots) at -20°C for longer. Avoid repeated freezing and thawing.
Stability:	Shelf life: one year from despatch.
Predicted Protein Size:	62199 Da
Gene Name:	TBC1 domain family member 3H
Database Link:	<a href="#">Entrez Gene 729877 Human</a> <a href="#">POC7X1</a>
Background:	TBC1D3H acts as a GTPase activating protein for RAB5. It does not act on RAB4 or RAB11 (By similarity).



[View online »](#)

Synonyms: TBC1 domain family member 3H

### Product images:



TBC1D3H Antibody (N-term) (Cat. #AP54172PU-N) western blot analysis in Jurkat cell line lysates (35g/lane). This demonstrates the TBC1D3H antibody detected the TBC1D3H protein (arrow).