

Product datasheet for **AP54171PU-N**

TBC1D3 (TBC1D3F) (C-term) Rabbit Polyclonal Antibody

Product data:

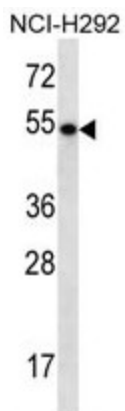
Product Type:	Primary Antibodies
Applications:	WB
Recommended Dilution:	ELISA: 1/1000. Western Blot: 1/100 - 1/500.
Reactivity:	Human
Host:	Rabbit
Isotype:	Ig
Clonality:	Polyclonal
Immunogen:	KLH conjugated synthetic peptide between 497-527 amino acids from the C-terminal region of human TBC1D3E
Specificity:	This antibody reacts to TBC1D3E.
Formulation:	PBS State: Aff - Purified State: Liquid purified Ig fraction Preservative: 0.09% (W/V) sodium azide
Concentration:	lot specific
Purification:	Affinity chromatography on Protein A
Conjugation:	Unconjugated
Storage:	Store the antibody undiluted at 2-8°C for one month or (in aliquots) at -20°C for longer. Avoid repeated freezing and thawing.
Stability:	Shelf life: one year from despatch.
Predicted Protein Size:	62199 Da
Gene Name:	TBC1 domain family member 3F
Database Link:	Entrez Gene 84218 Human A6NER0
Background:	BC1D3E acts as a GTPase activating protein for RAB5. Does not act on RAB4 or RAB11 (By similarity).



[View online »](#)

Synonyms: TBC1D3E, TBC1 domain family member 3F

Product images:



TBC1D3E Antibody (C-term) western blot analysis in NCI-H292 cell line lysates (35ug/lane). This demonstrates the TBC1D3E antibody detected the TBC1D3E protein (arrow).