

## Product datasheet for **AP54164PU-N**

### **TBC1D14 (Center) Rabbit Polyclonal Antibody**

#### Product data:

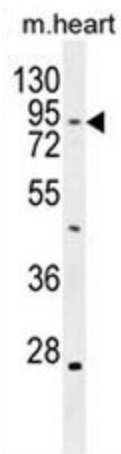
Product Type:	Primary Antibodies
Applications:	IHC, WB
Recommended Dilution:	<b>ELISA:</b> 1/1000. <b>Western Blot:</b> 1/100 - 1/500. <b>Immunohistochemistry on paraffin sections:</b> 1/50 - 1/100.
Reactivity:	Human, Mouse
Host:	Rabbit
Isotype:	Ig
Clonality:	Polyclonal
Immunogen:	KLH conjugated synthetic peptide between 259-286 amino acids from the Central region of human TBC14
Specificity:	This antibody reacts to TBC14.
Formulation:	PBS State: Aff - Purified State: Liquid purified Ig fraction Preservative: 0.09% (W/V) sodium azide
Concentration:	lot specific
Purification:	Affinity chromatography on Protein A
Conjugation:	Unconjugated
Storage:	Store the antibody undiluted at 2-8°C for one month or (in aliquots) at -20°C for longer. Avoid repeated freezing and thawing.
Stability:	Shelf life: one year from despatch.
Predicted Protein Size:	78137 Da
Gene Name:	TBC1 domain family member 14
Database Link:	<a href="#">Entrez Gene 57533 Human Q9P2M4</a>
Background:	May act as a GTPase-activating protein for Rab family protein(s) (By similarity).



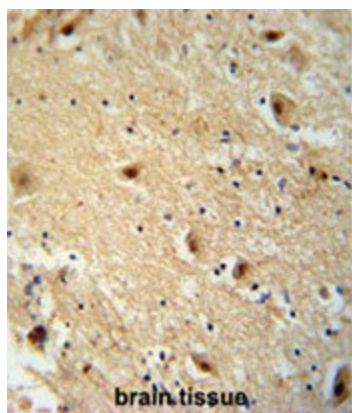
[View online »](#)

Synonyms: KIAA1322

### Product images:



TBC14 Antibody (Center) western blot analysis in mouse heart tissue lysates (35ug/lane). This demonstrates the TBC14 antibody detected the TBC14 protein (arrow).



TBC14 antibody (Center) immunohistochemistry analysis in formalin fixed and paraffin embedded human brain tissue followed by peroxidase conjugation of the secondary antibody and DAB staining. This data demonstrates the use of the TBC14 antibody (Center) for immunohistochemistry. Clinical relevance has not been evaluated.