

Product datasheet for **AP54163PU-N**

TBB8B (C-term) Rabbit Polyclonal Antibody

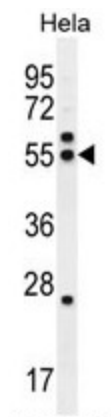
Product data:

Product Type:	Primary Antibodies
Applications:	WB
Recommended Dilution:	ELISA: 1/1000. Western Blot: 1/100 - 1/500.
Reactivity:	Human
Host:	Rabbit
Isotype:	Ig
Clonality:	Polyclonal
Immunogen:	KLH conjugated synthetic peptide between 327-355 amino acids from the C-terminal region of human TBB8B
Specificity:	This antibody reacts to TBB8B.
Formulation:	PBS State: Aff - Purified State: Liquid purified Ig fraction Preservative: 0.09% (W/V) sodium azide
Concentration:	lot specific
Purification:	Affinity chromatography on Protein A
Conjugation:	Unconjugated
Storage:	Store the antibody undiluted at 2-8°C for one month or (in aliquots) at -20°C for longer. Avoid repeated freezing and thawing.
Stability:	Shelf life: one year from despatch.
Predicted Protein Size:	49573 Da
Database Link:	A6NNZ2
Background:	Tubulin is the major constituent of microtubules. It binds two moles of GTP, one at an exchangeable site on the beta chain and one at a non-exchangeable site on the alpha-chain (By similarity).
Synonyms:	Tubulin beta-8 chain B



[View online »](#)

Product images:



TBB8B Antibody (C-term) (Cat. #AP54163PU-N) western blot analysis in HeLa cell line lysates (35g/lane). This demonstrates the TBB8B antibody detected the TBB8B protein (arrow).