

Product datasheet for **AP54162PU-N**

TUBB1 (N-term) Rabbit Polyclonal Antibody

Product data:

Product Type:	Primary Antibodies
Applications:	IHC, WB
Recommended Dilution:	ELISA: 1/1000. Western Blot: 1/100 - 1/500. Immunohistochemistry on paraffin sections: 1/50 - 1/100.
Reactivity:	Human
Host:	Rabbit
Isotype:	Ig
Clonality:	Polyclonal
Immunogen:	KLH conjugated synthetic peptide between 11-39 amino acids from the N-terminal region of human TBB1
Specificity:	This antibody reacts to TBB1.
Formulation:	PBS State: Aff - Purified State: Liquid purified Ig fraction Preservative: 0.09% (W/V) sodium azide
Concentration:	lot specific
Purification:	Affinity chromatography on Protein A
Conjugation:	Unconjugated
Storage:	Store the antibody undiluted at 2-8°C for one month or (in aliquots) at -20°C for longer. Avoid repeated freezing and thawing.
Stability:	Shelf life: one year from despatch.
Predicted Protein Size:	50327 Da
Gene Name:	tubulin beta 1 class VI
Database Link:	Entrez Gene 81027 Human Q9H4B7



[View online »](#)

Background:

This gene encodes a member of the beta tubulin protein family. Beta tubulins are one of two core protein families (alpha and beta tubulins) that heterodimerize and assemble to form microtubules. This protein is specifically expressed in platelets and megakaryocytes and may be involved in proplatelet production and platelet release. A mutations in this gene is associated with autosomal dominant macrothrombocytopenia. Two pseudogenes of this gene are found on chromosome Y.

Synonyms:

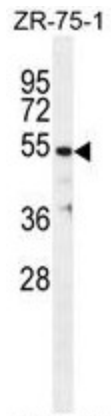
Tubulin beta 1, Tubulin beta-1 chain, beta I Tubulin

Protein Families:

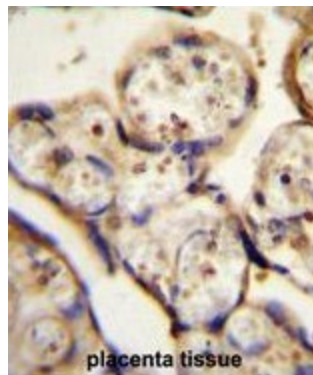
Druggable Genome

Protein Pathways:

Gap junction, Pathogenic Escherichia coli infection

Product images:


TBB1 Antibody (N-term) western blot analysis in ZR-75-1 cell line lysates (35ug/lane). This demonstrates the TBB1 antibody detected the TBB1 protein (arrow).



TBB1 Antibody (N-term) immunohistochemistry analysis in formalin fixed and paraffin embedded human placenta tissue followed by peroxidase conjugation of the secondary antibody and DAB staining. This data demonstrates the use of TBB1 Antibody (N-term) for immunohistochemistry. Clinical relevance has not been evaluated.